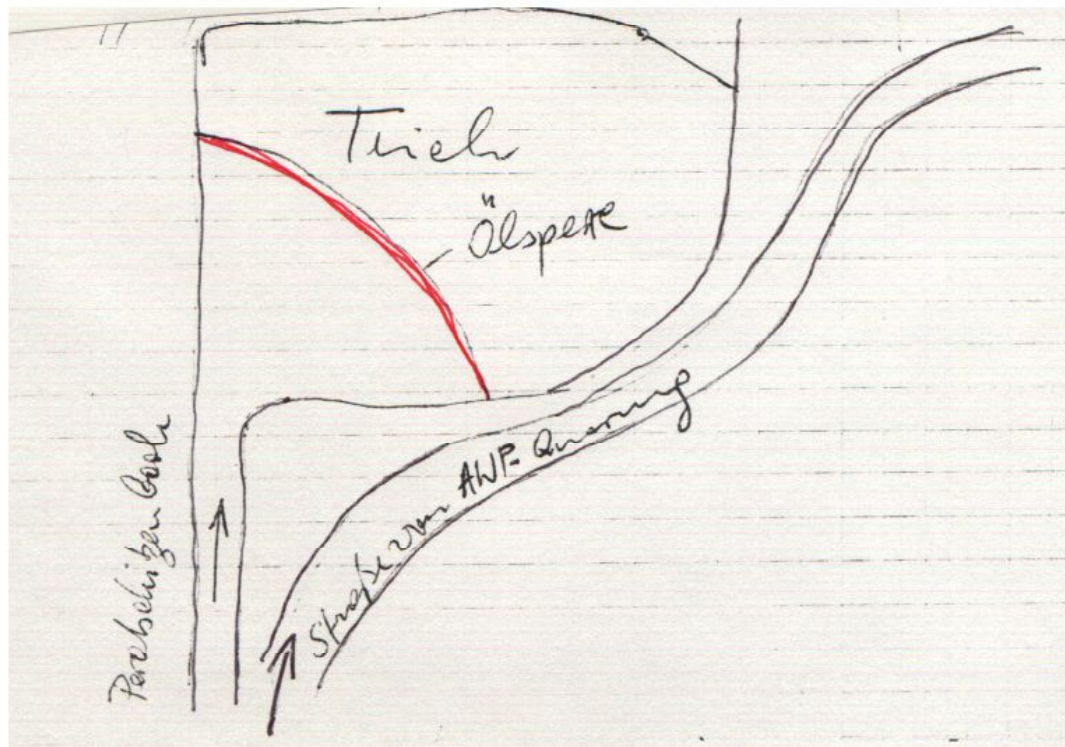
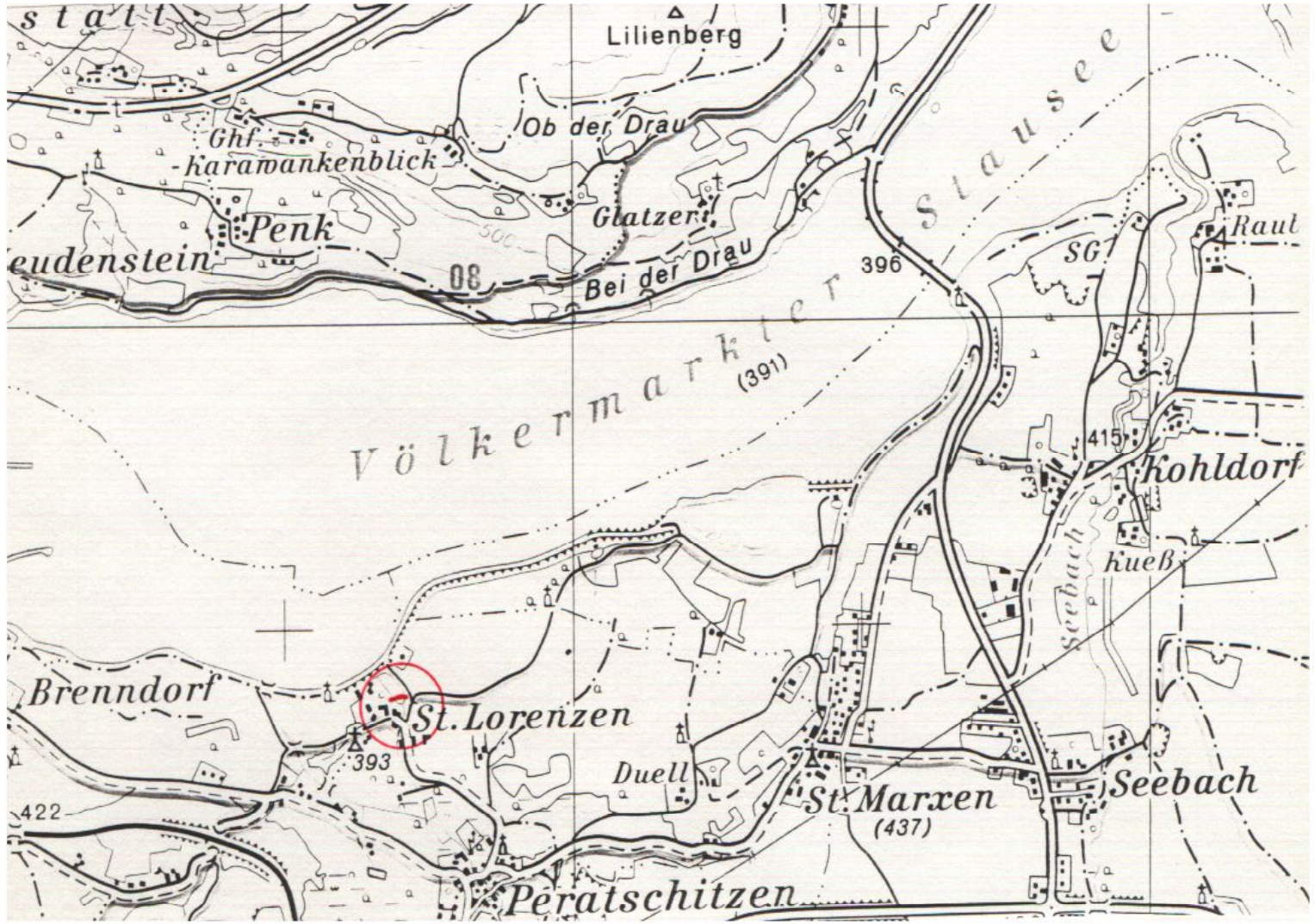


4/7

# Ölsperre Peratschitzenbach

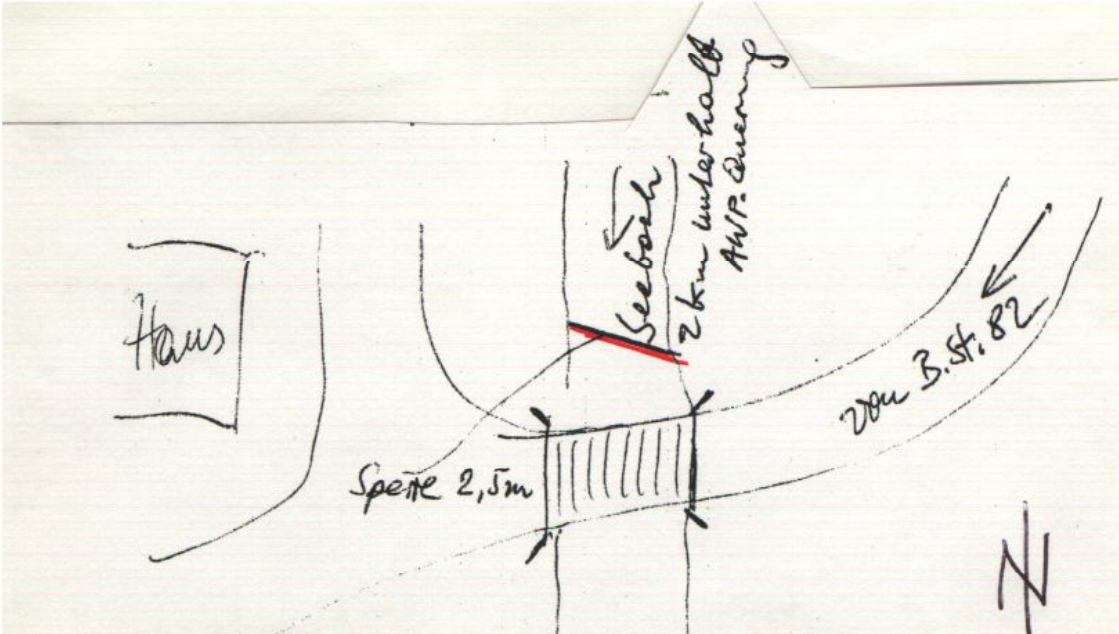
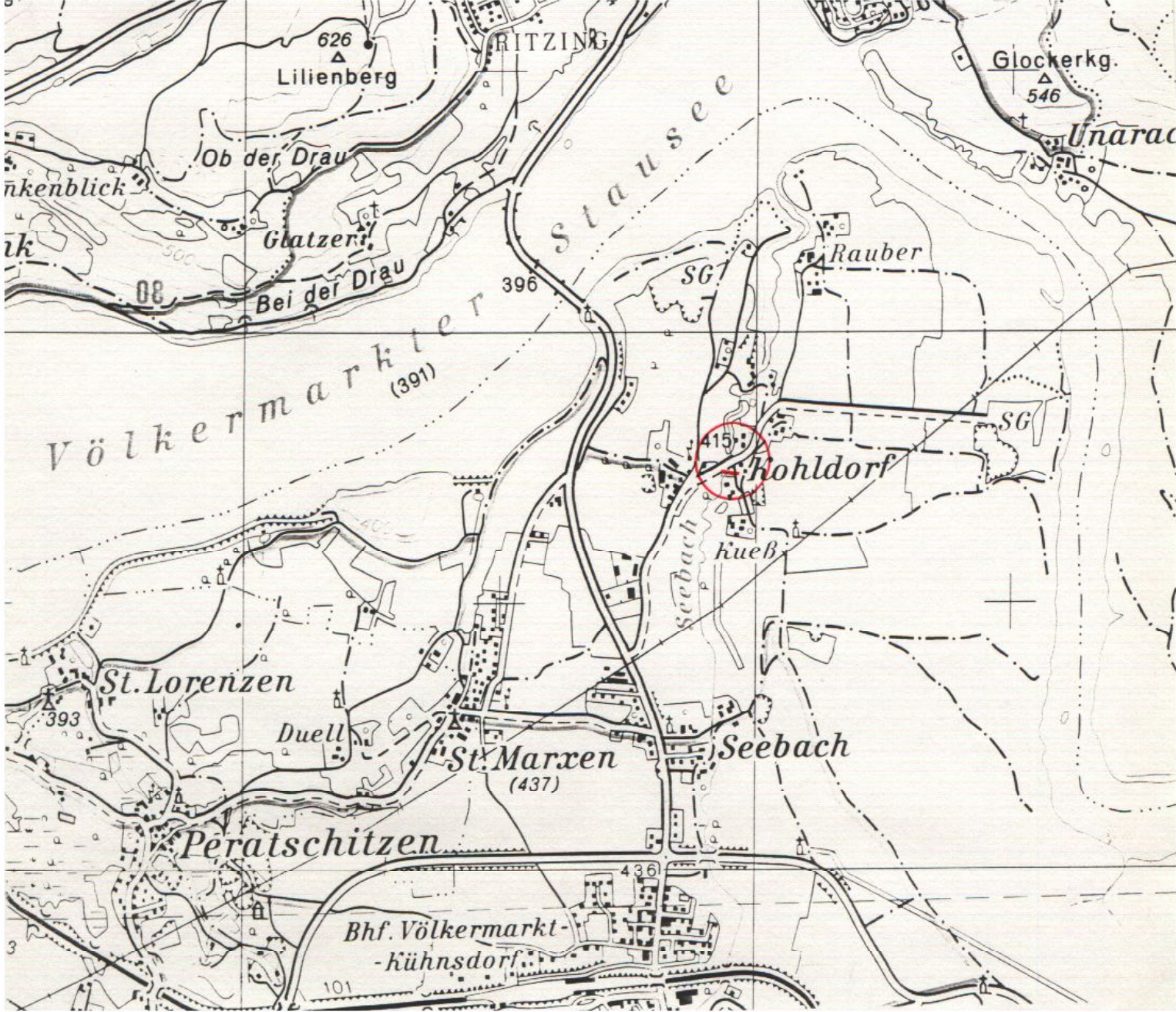
AWP km 142,60 - 142,95





# Ölsperre Seebach

AWP km 144,70 - 145,40

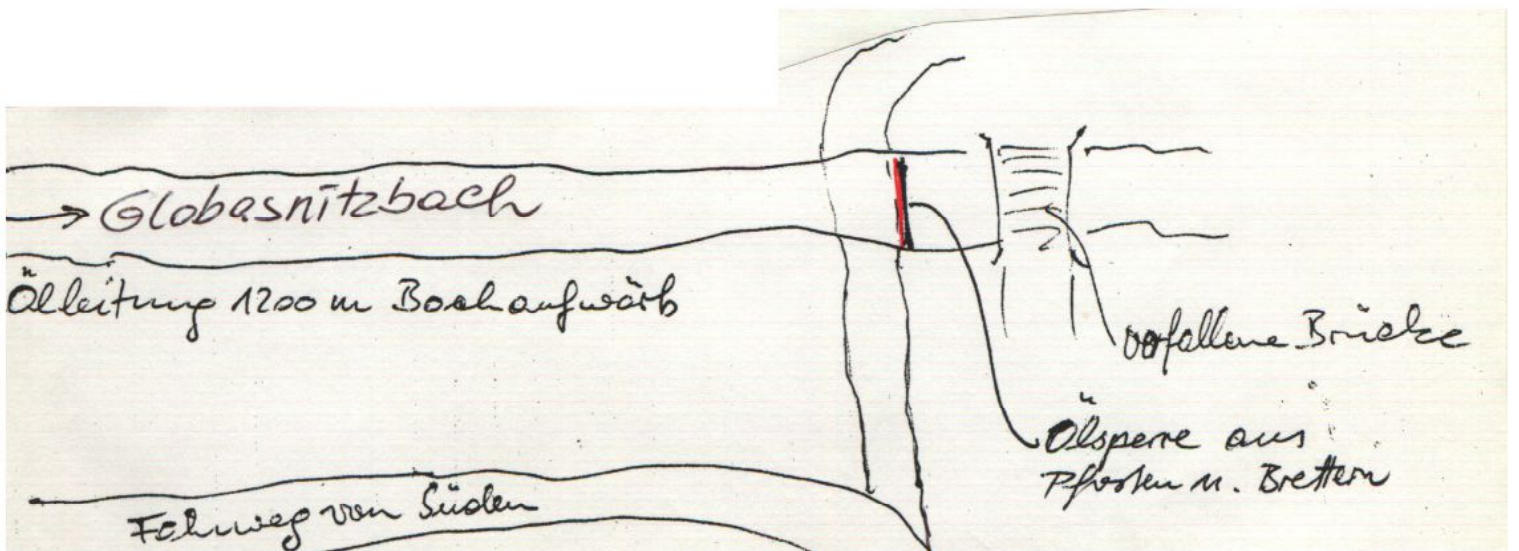
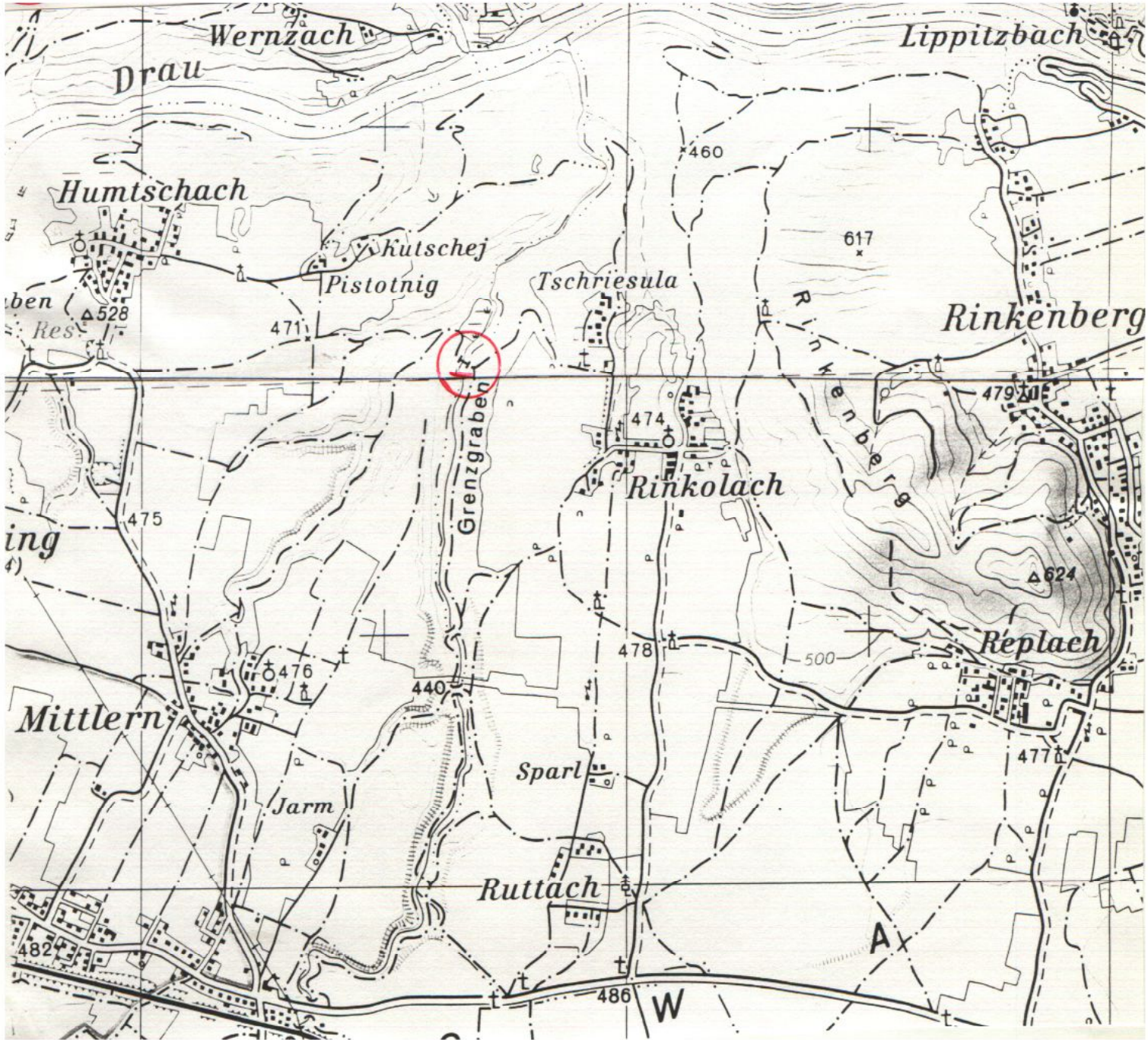




4/9

# Ölsperre Globasnitzbach

AWP km 152,63 - 152,90

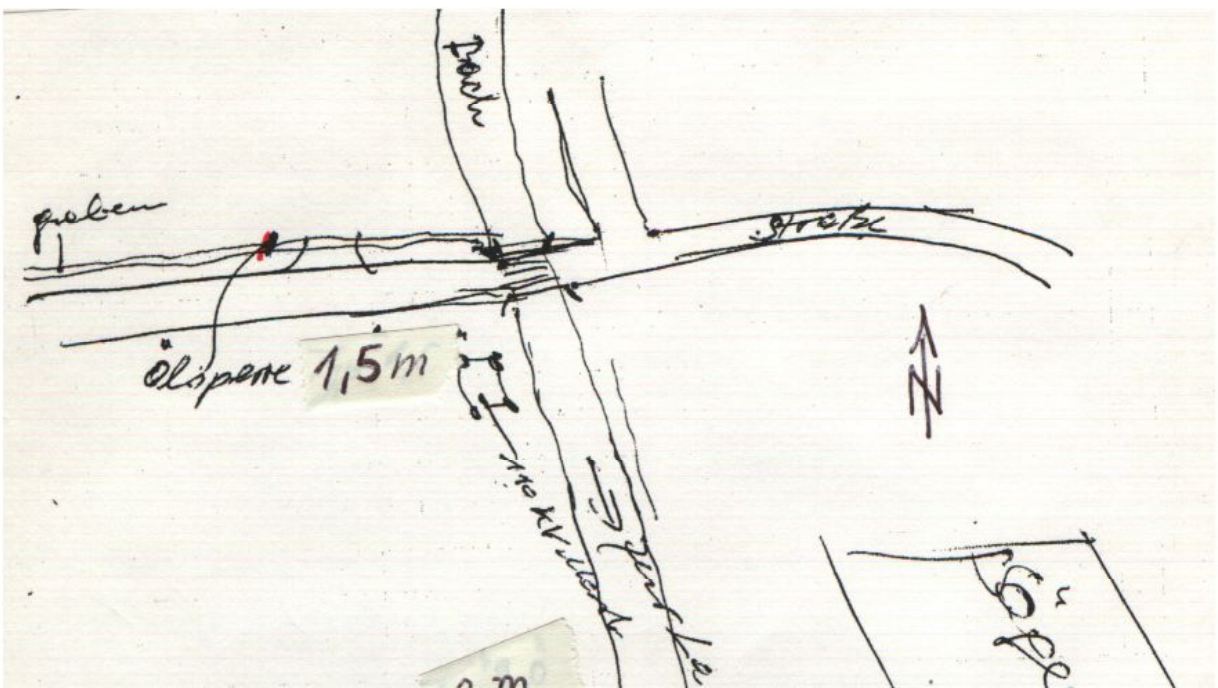
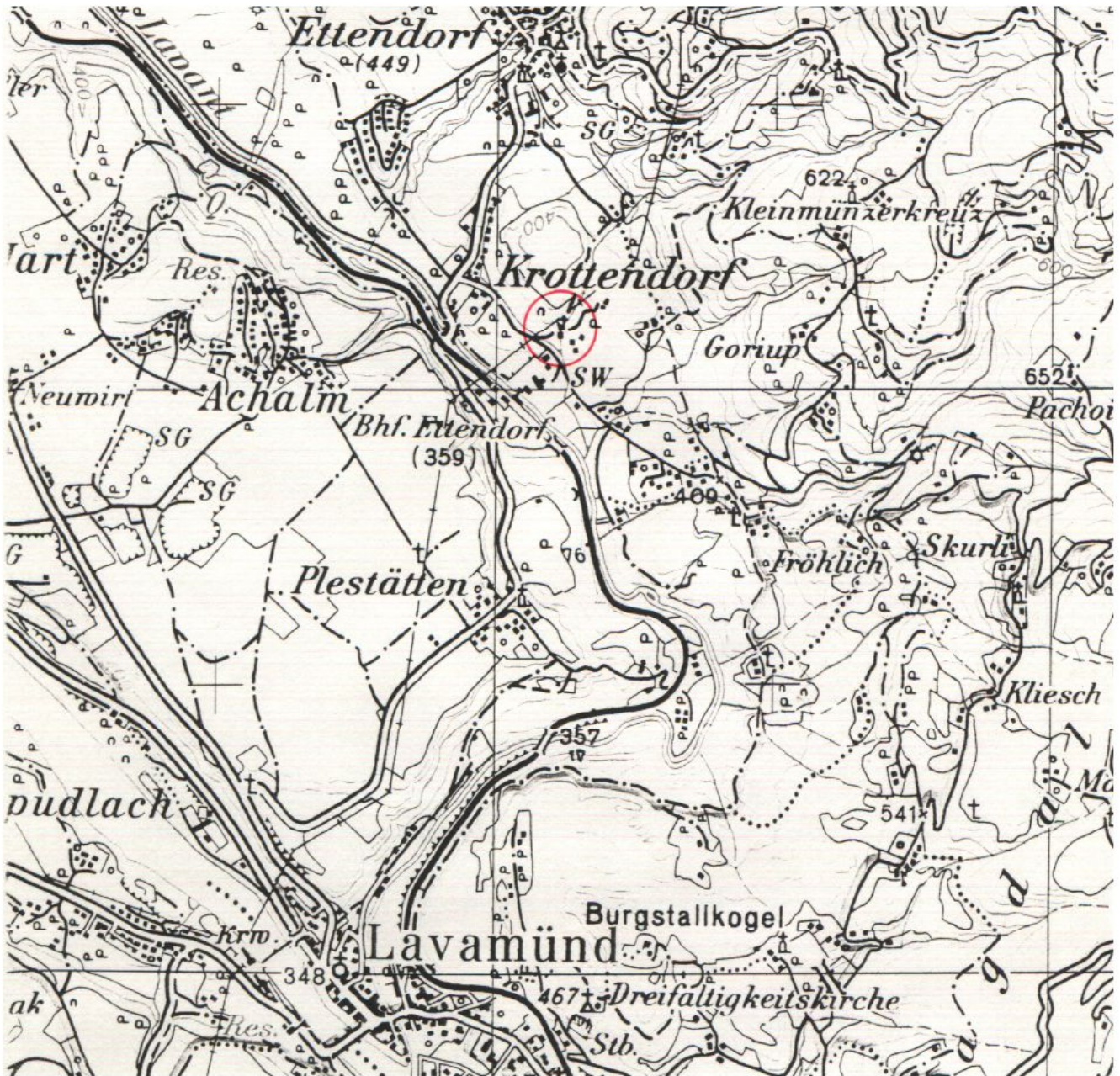




5/1

# Ölsperre Bach bei Krottendorf

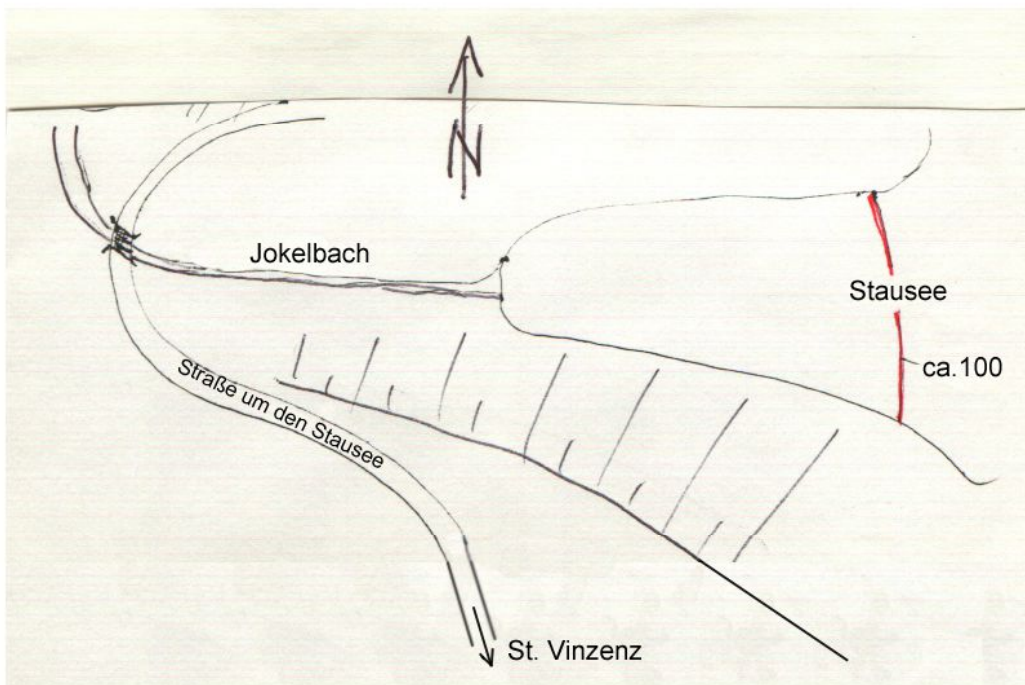
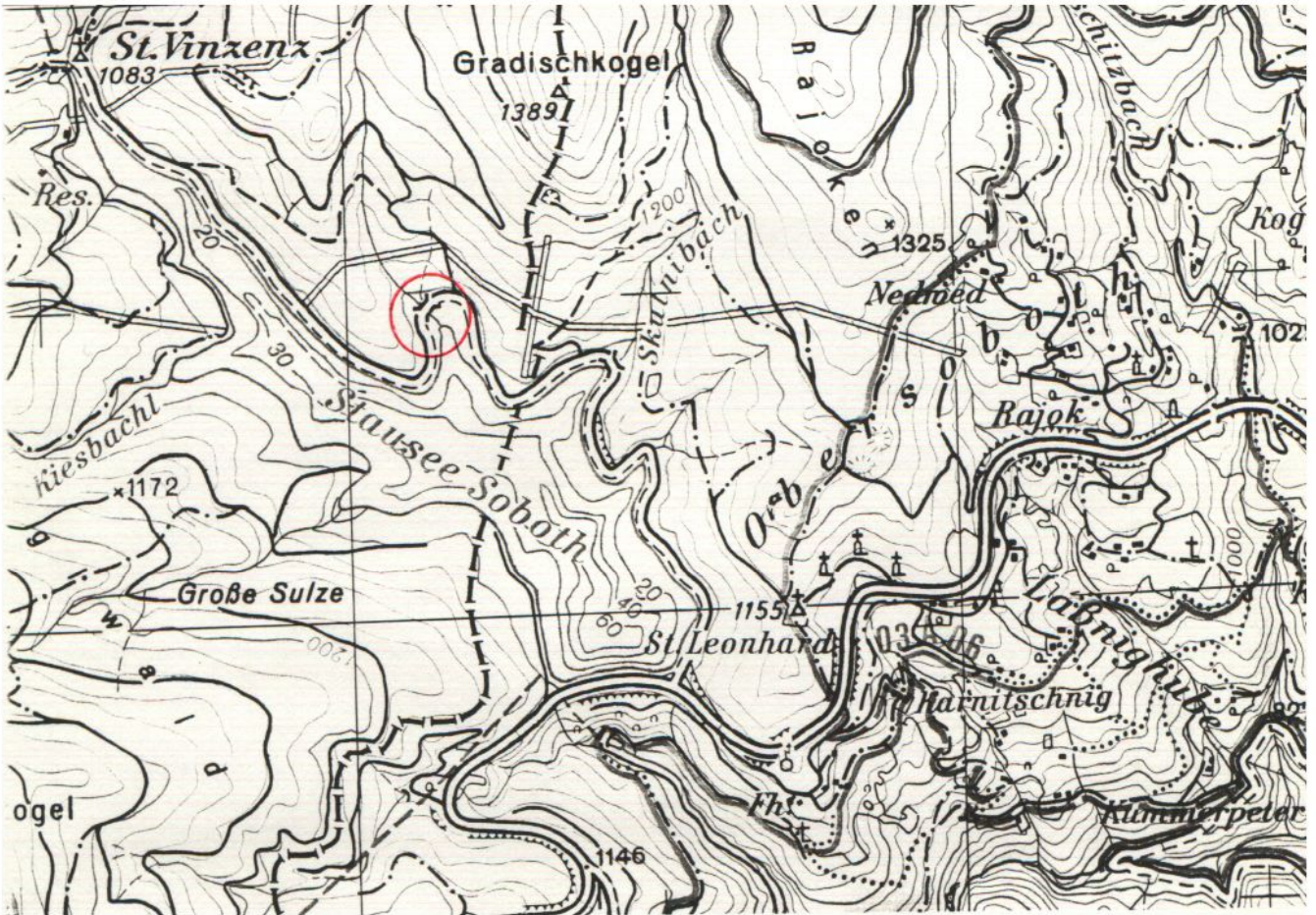
AWP km 172,60 - 177,26





6/1

# ÖLSPERRE JOKELBACH AWP km 179,900 - 180,560

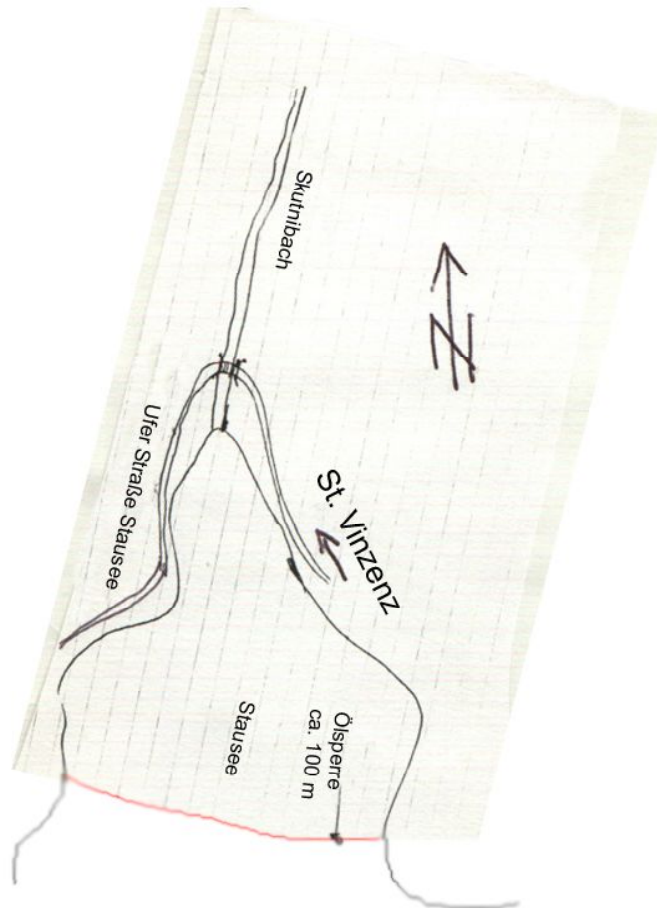
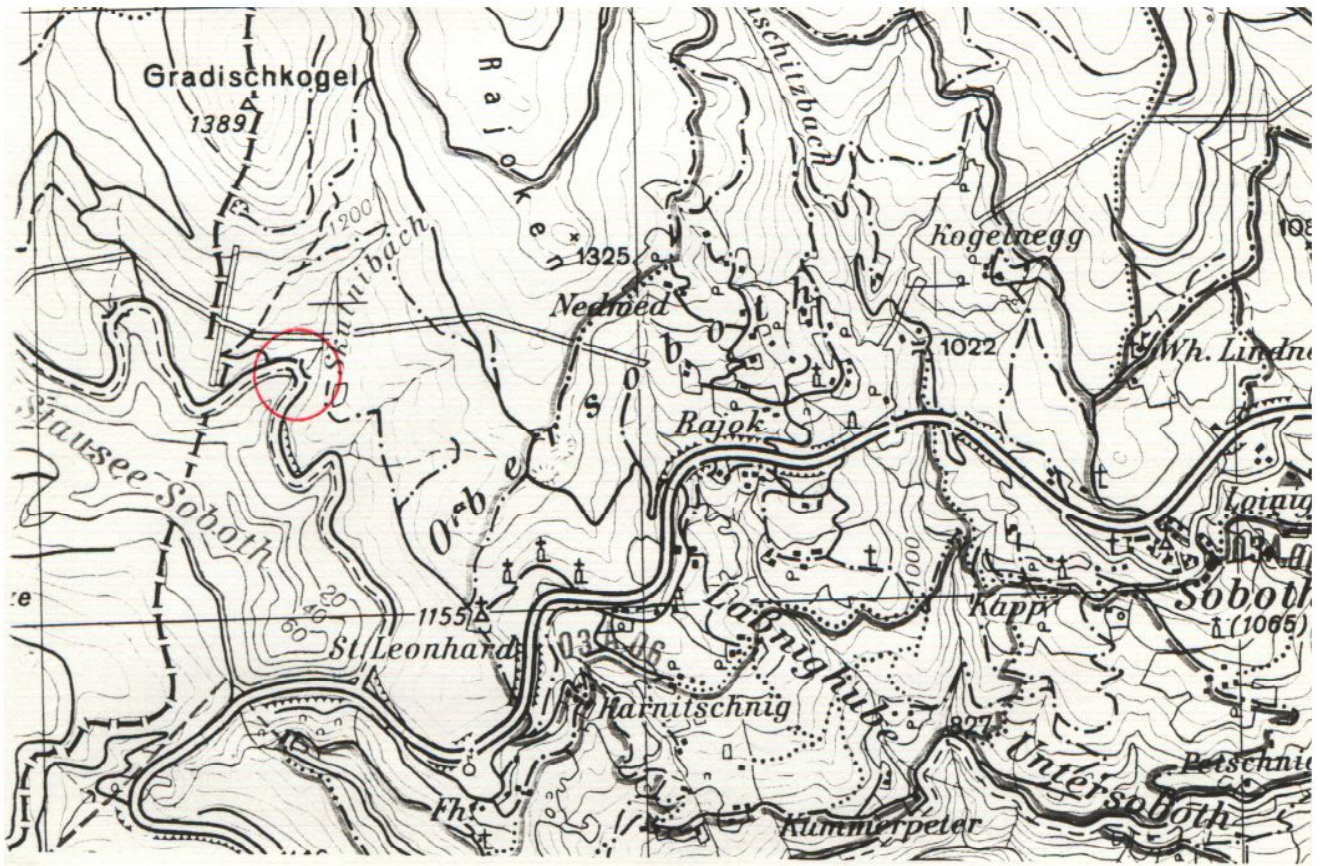




6/2

# Ölsperre Skutnibach

AWP km 180,560-181,450

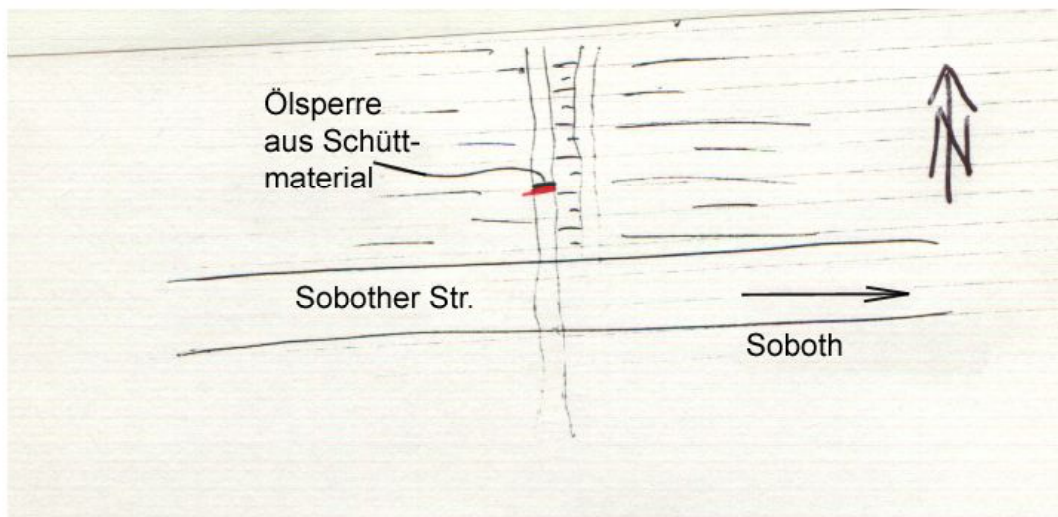
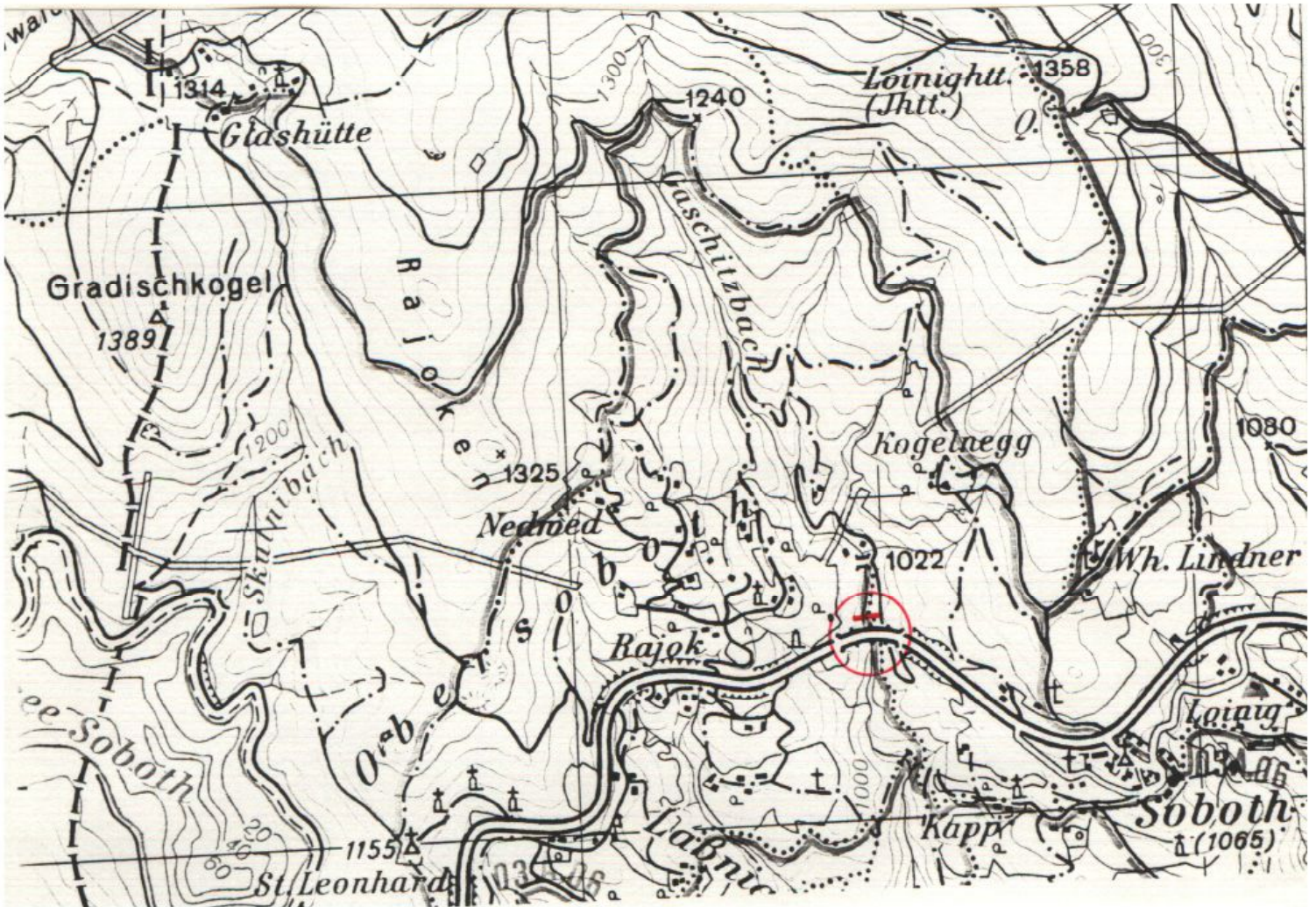




6/3

# ÖLSPERRE GASCHITZBACH

AWP km 182,500 - 184,200

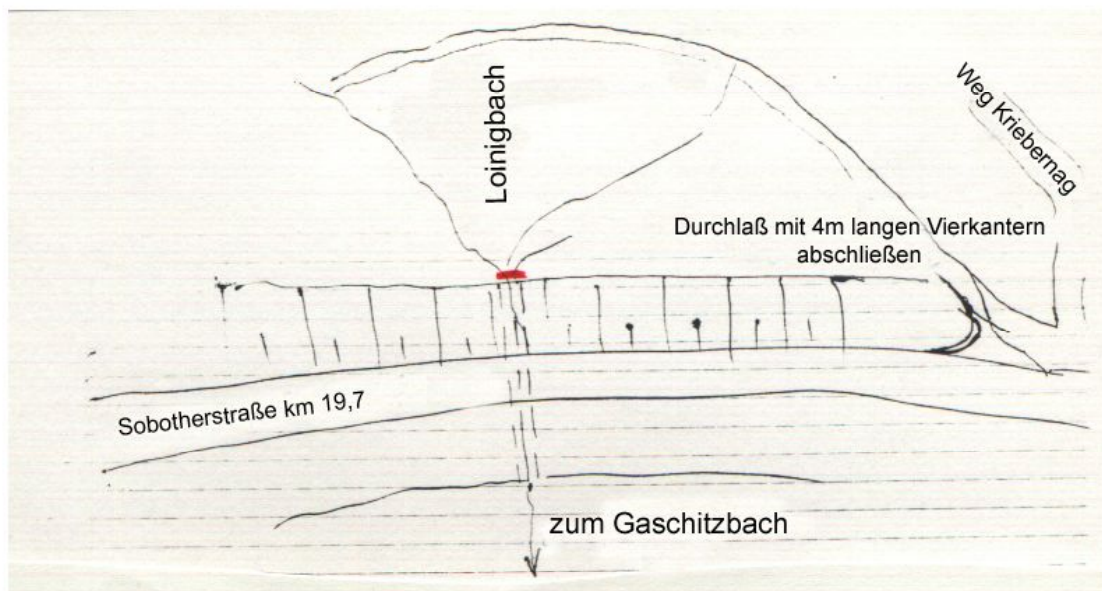
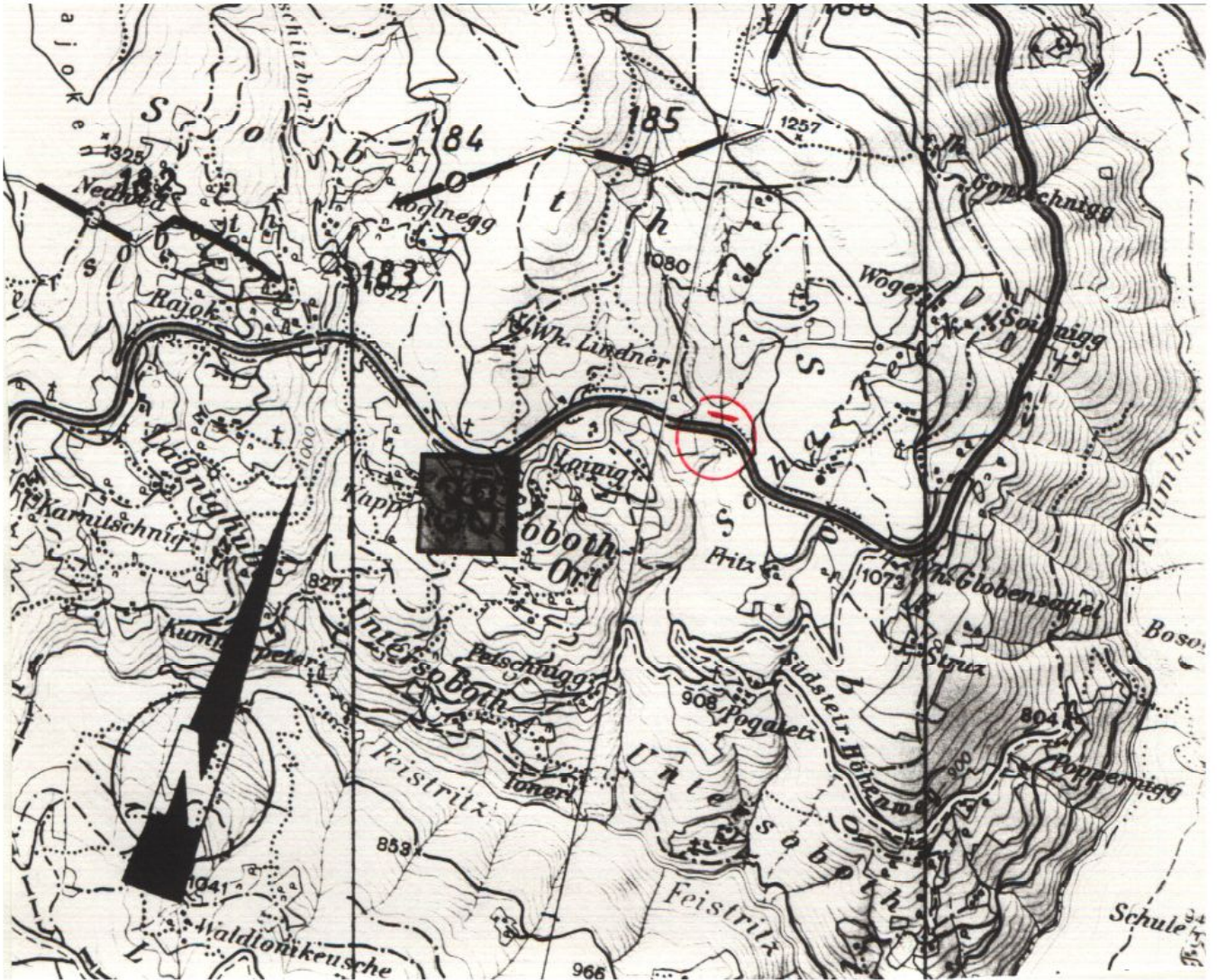




6/4

# ÖLSPERRE LOINIGBACH

AWP km 184,200 - 185,200

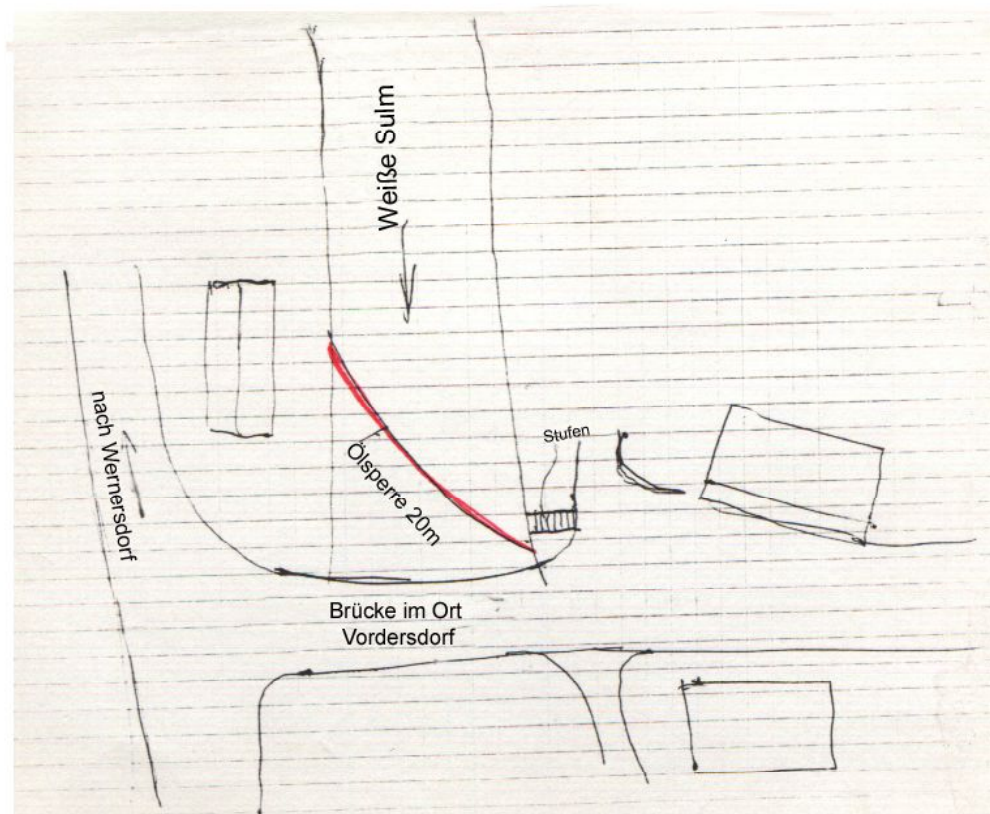




6/5

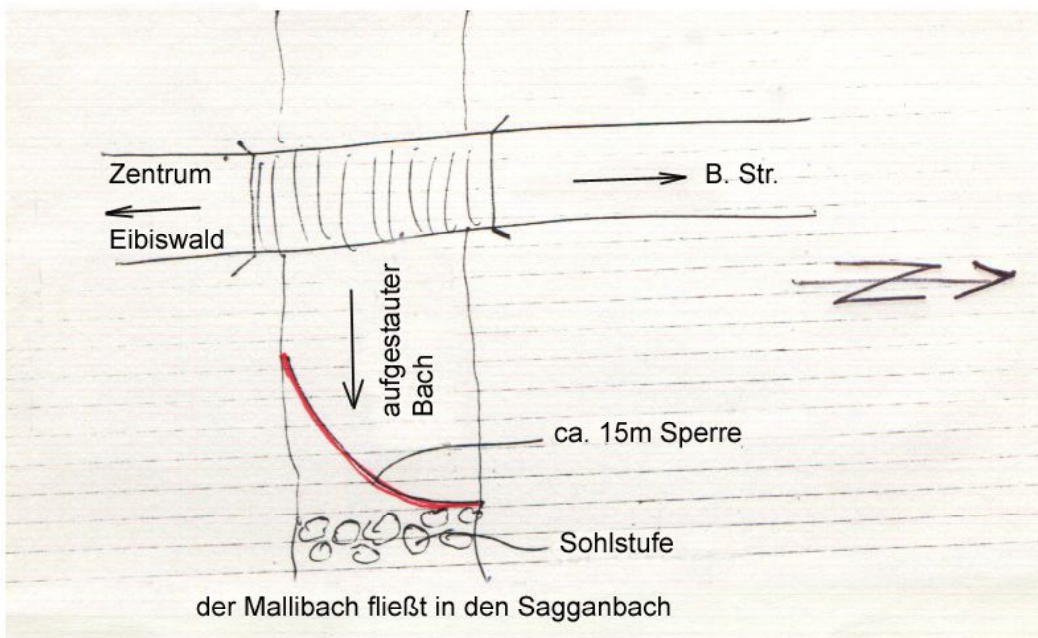
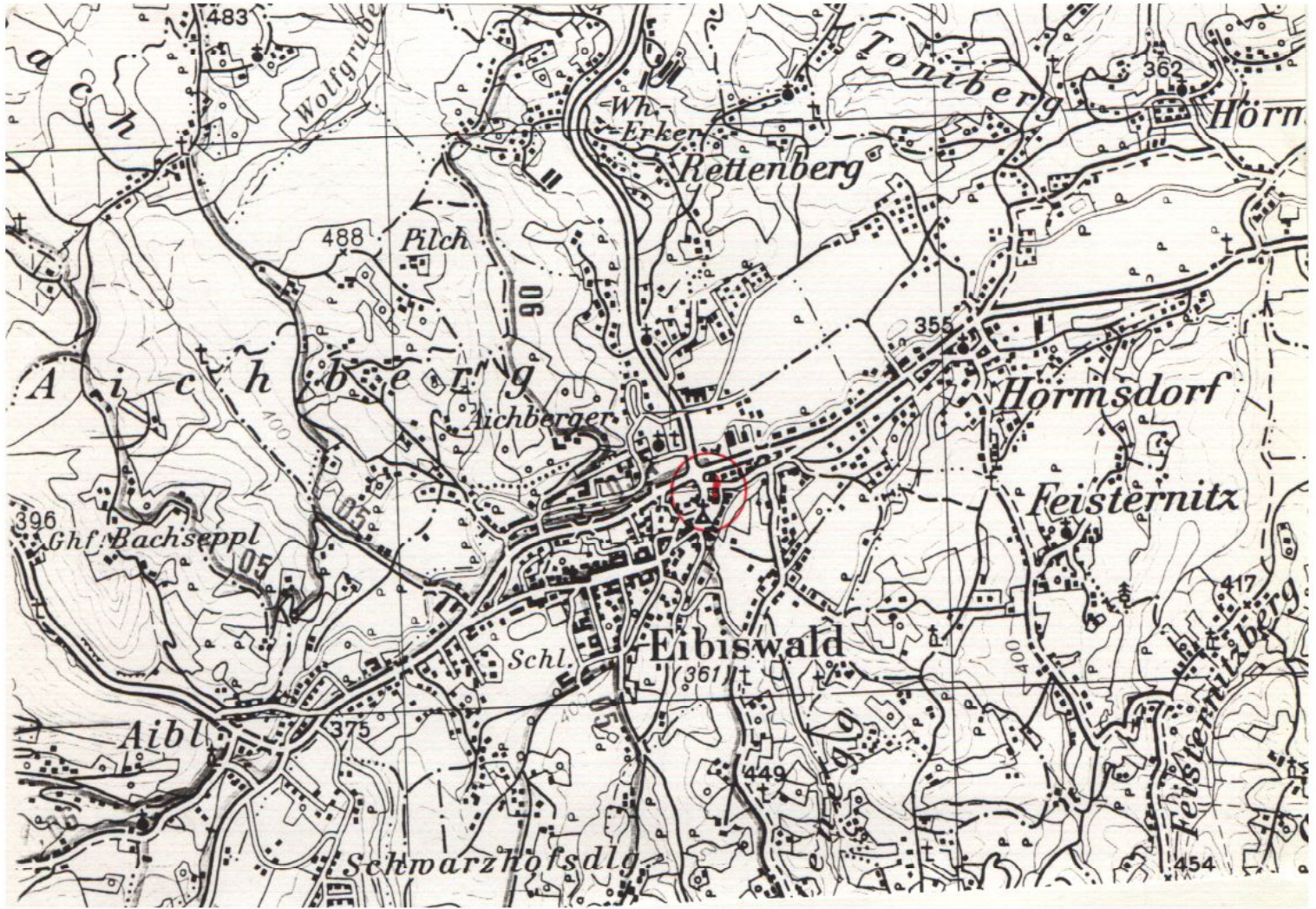
# Ölsperre Weisse Sulm

AWP km 188,600 - 198,560





# ÖLSPERRE MALLIBACH-SAGGAUBACH AWP km 192,000 - 193,400

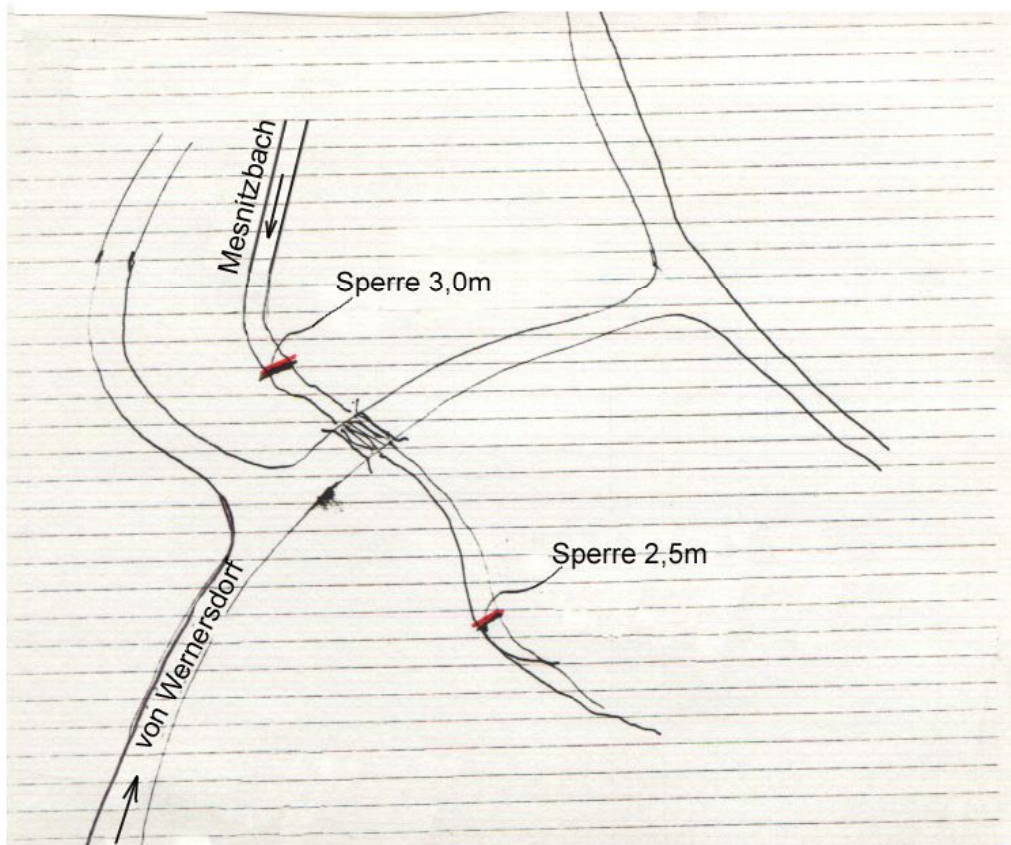
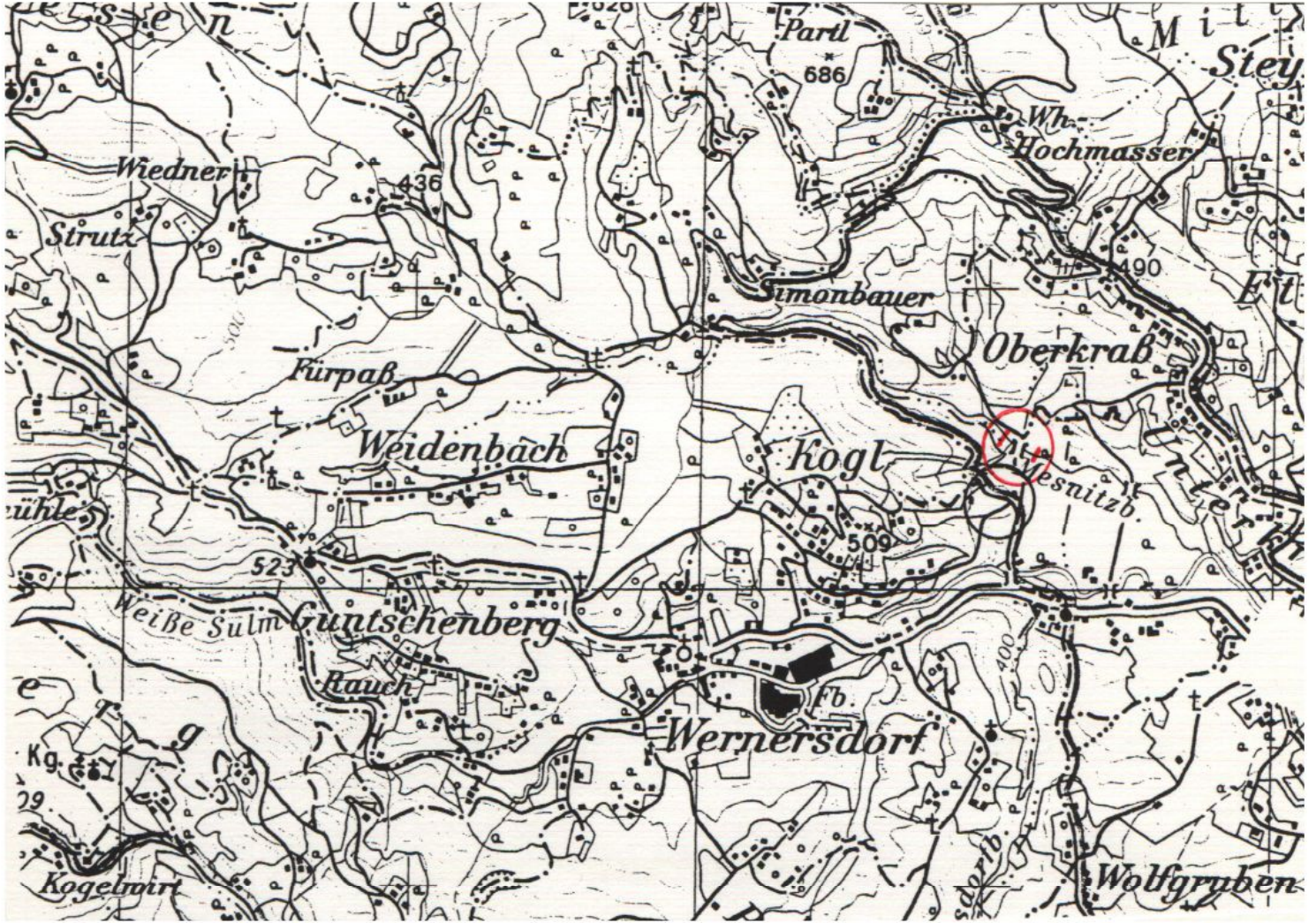




6/7

# ÖLSPERRE MESNITZBACH

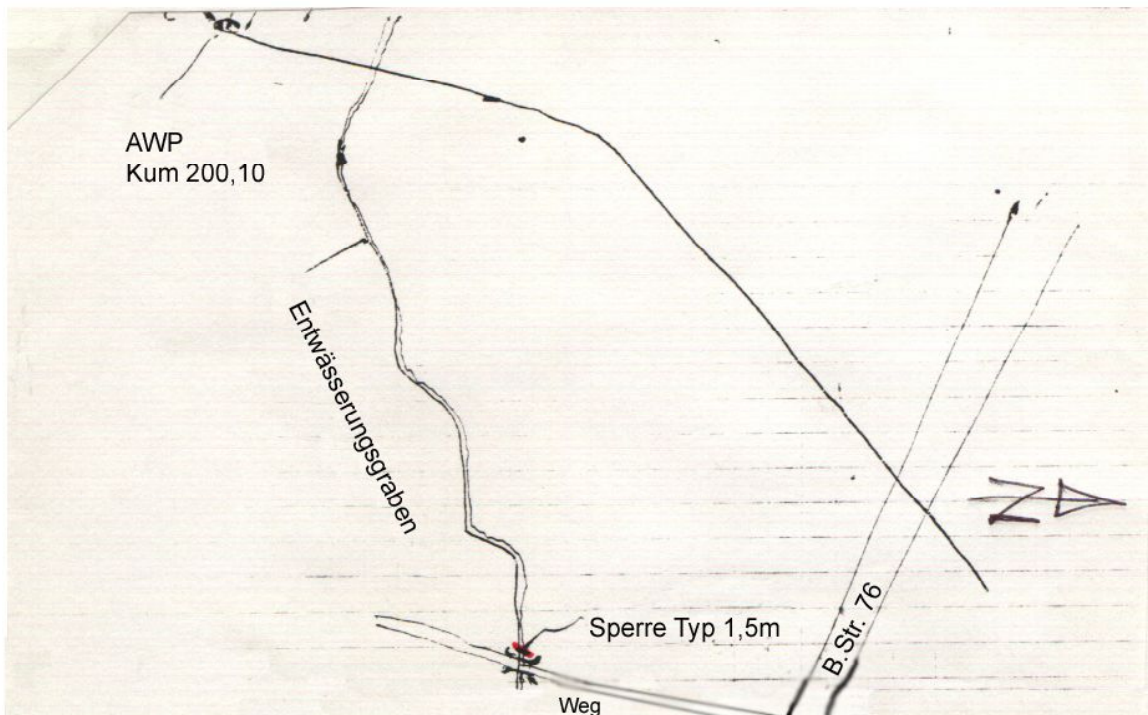
AWP km 195,700 - 198,560





# Ölsperre Entwässerungsgraben

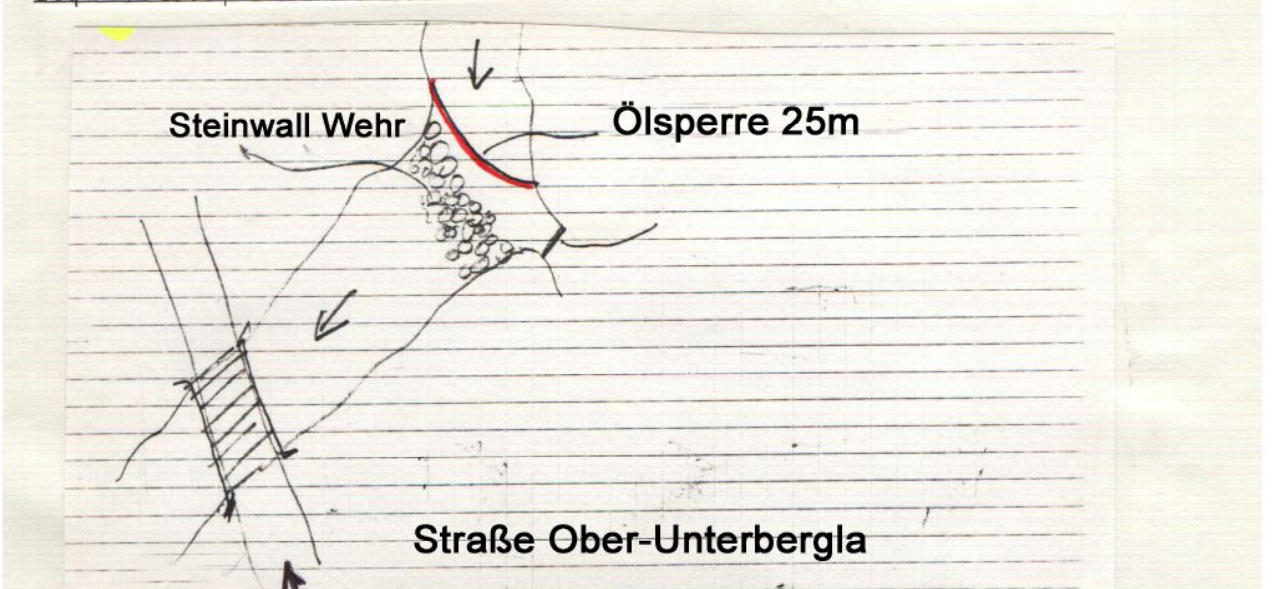
AWP km 198,560 - 200,570





# Ölsperre Schwarze Sulm

AWP km 201,2 - 201,75

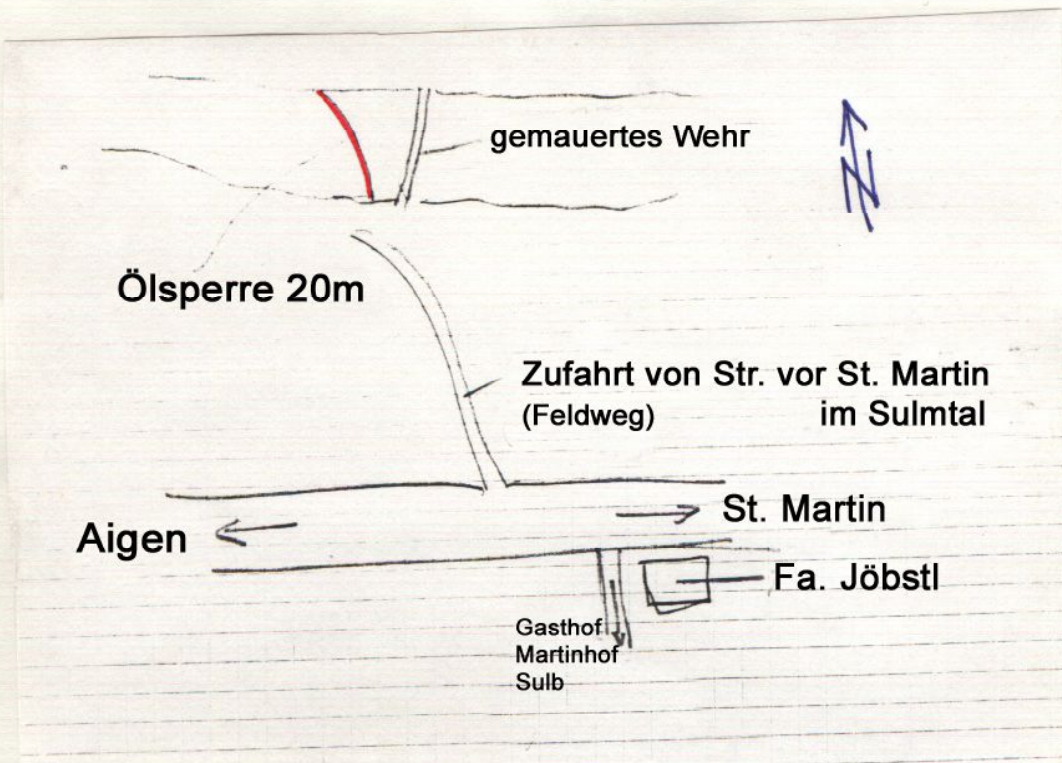
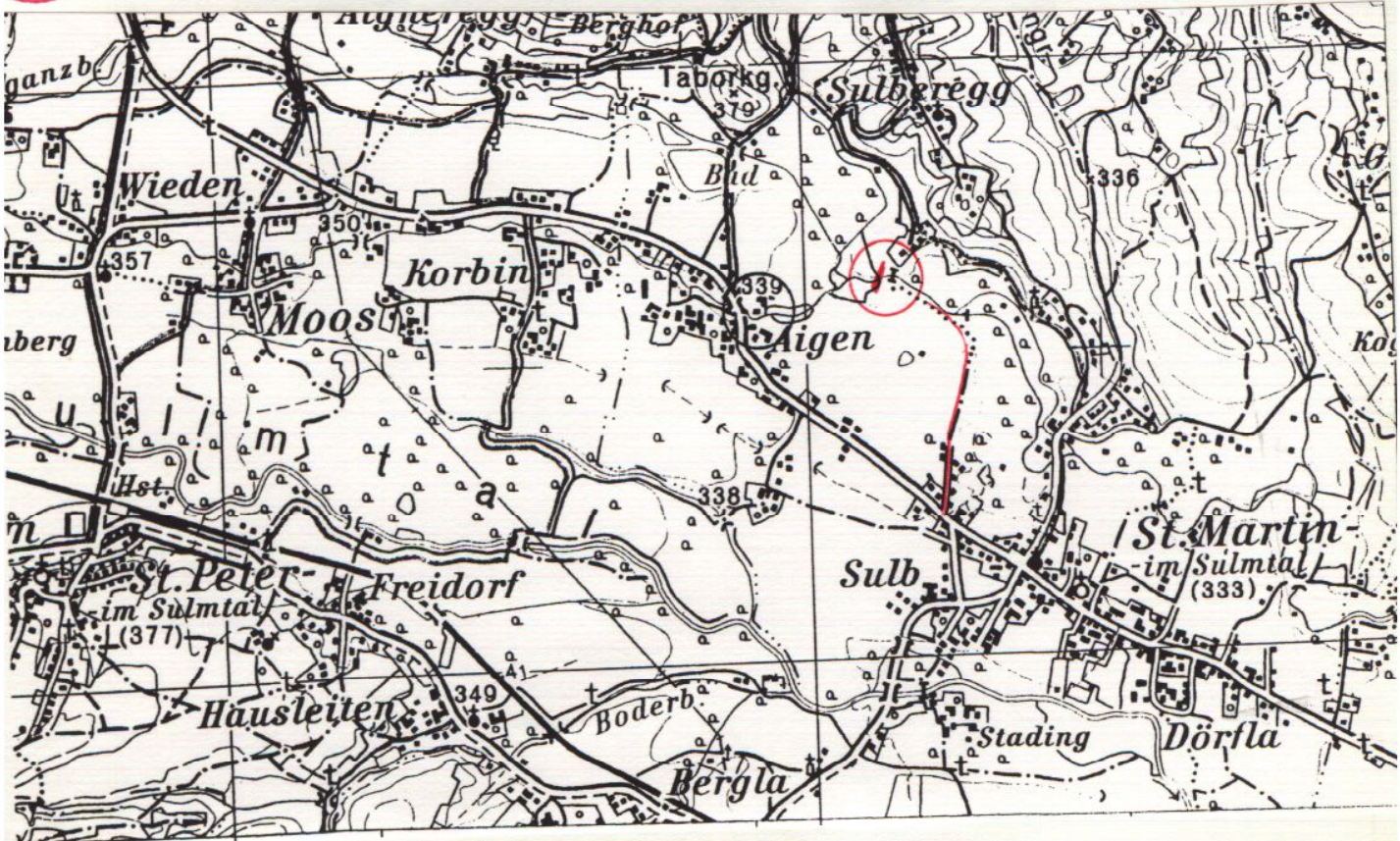




6/10

# Ölsperre Stullneggbach

AWP km 202,7 - 202,95

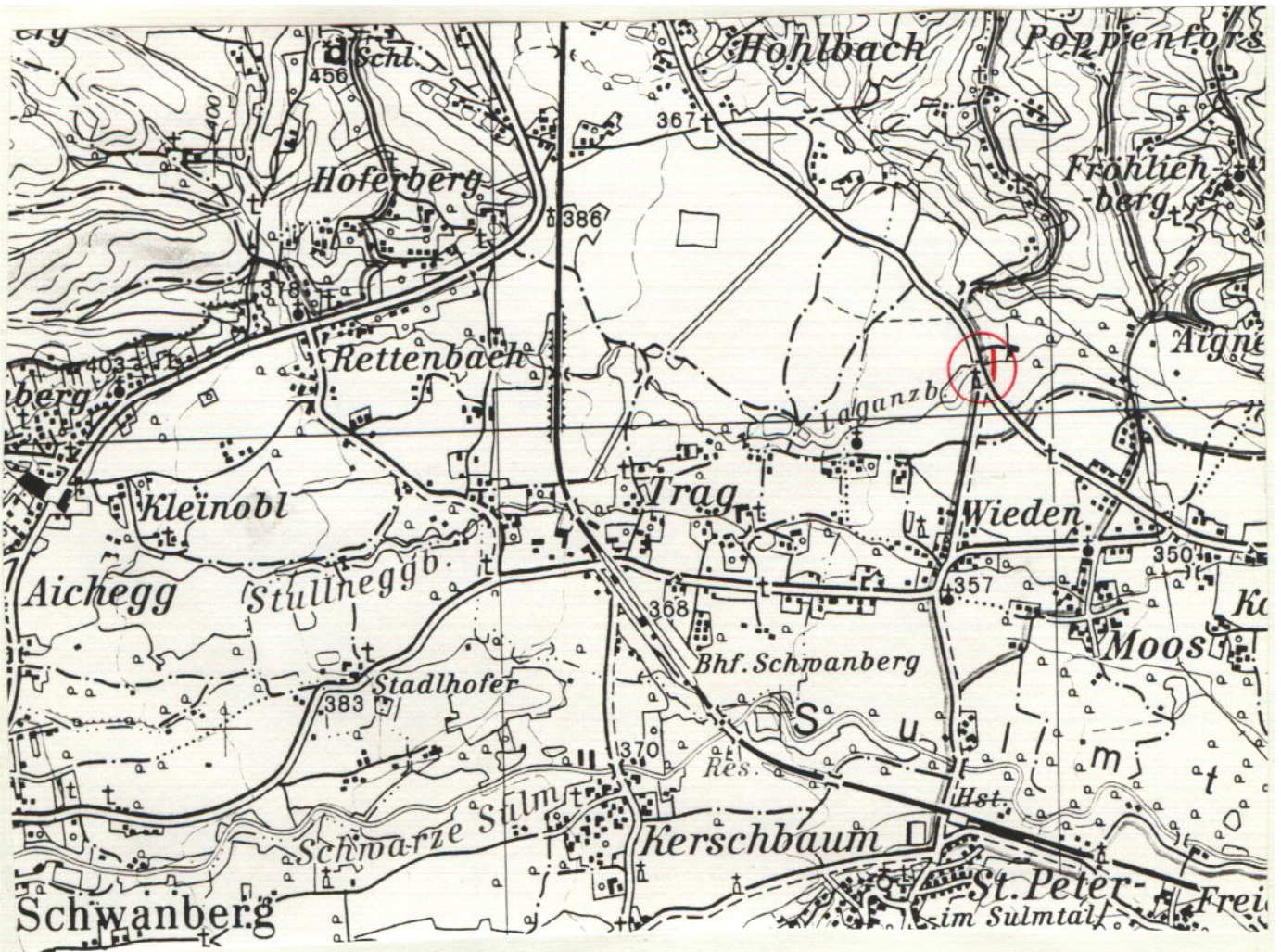




6/11

# Ölsperre Laganzbach

AWP km 203,1 - 203,6

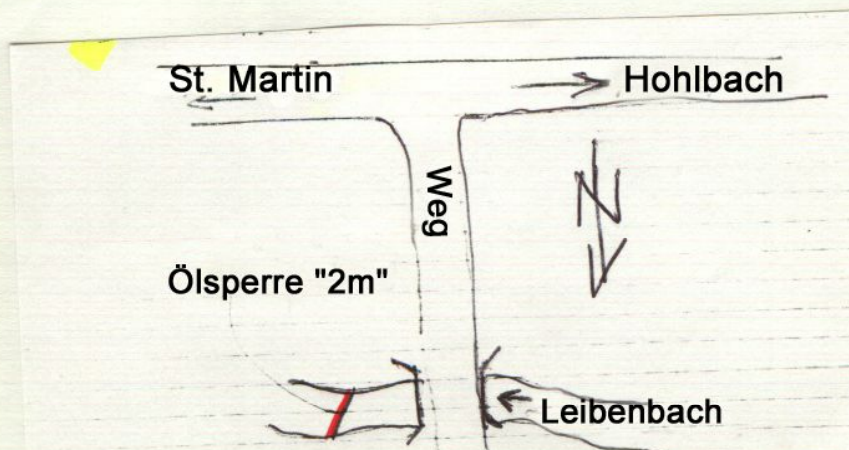




6/12

# Ölsperre Leibenbach

AWP km 204,3

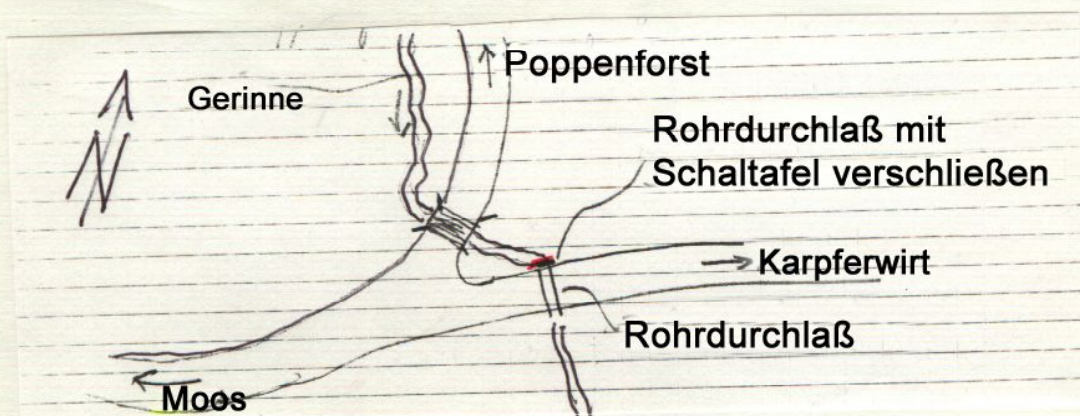
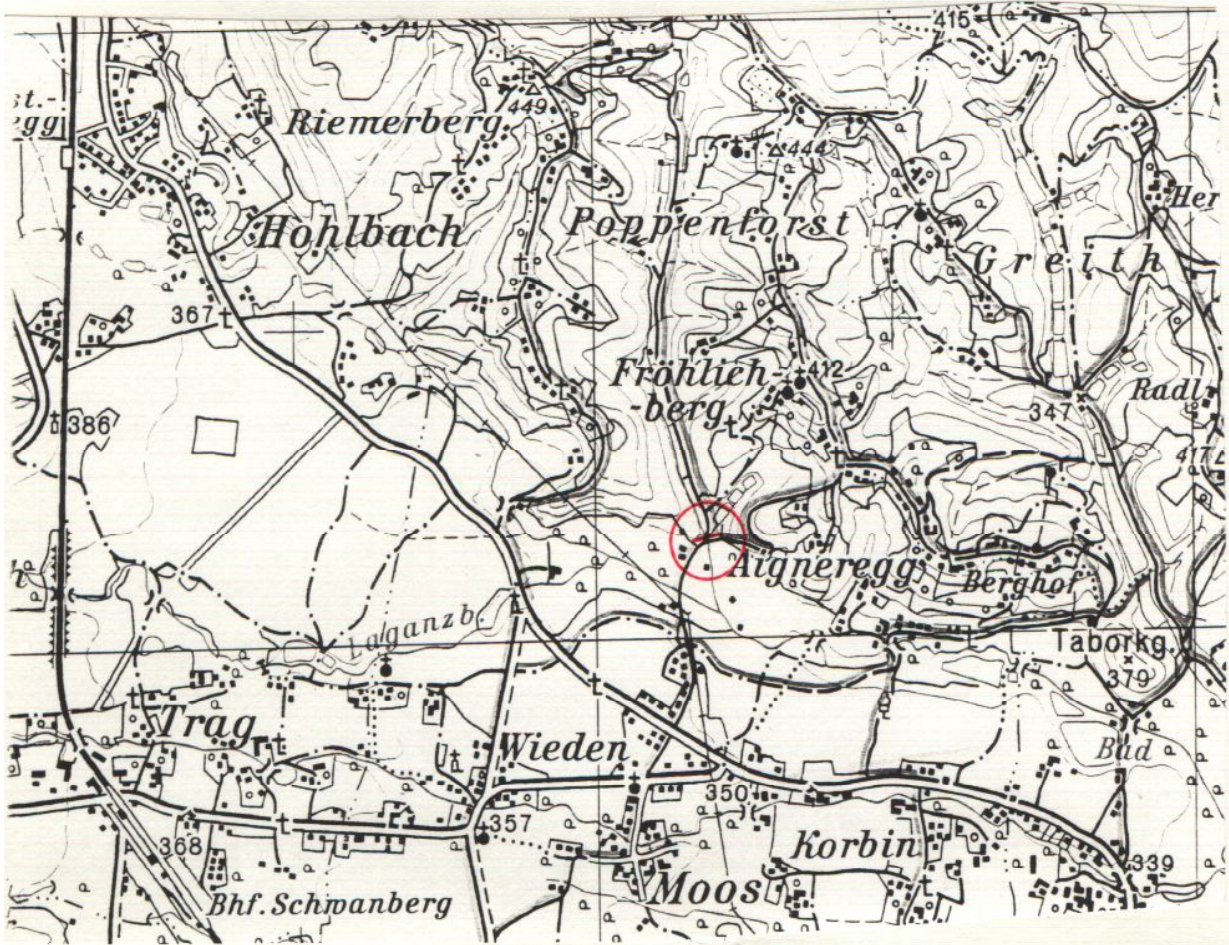




6/13

# Ölsperre Gerinne Poppenforst

AWP km 205,1 - 206,35





6/14

# Ölsperre Glainzbach

AWP km 207,3 - 207,9

