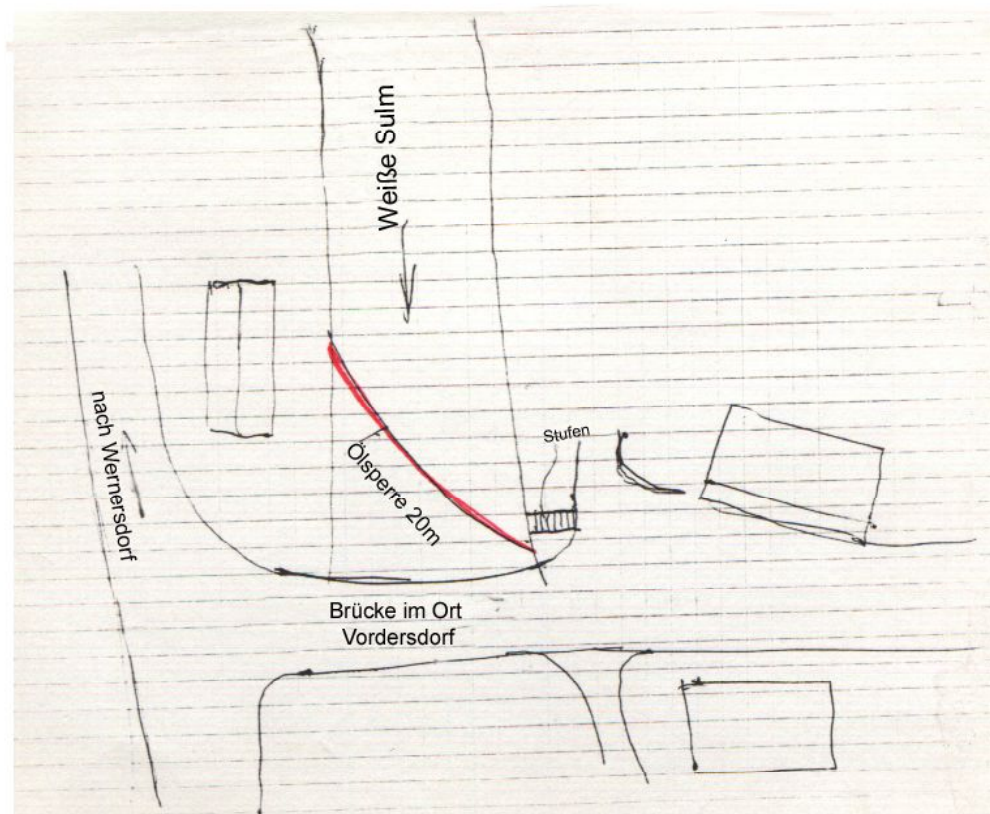


6/5

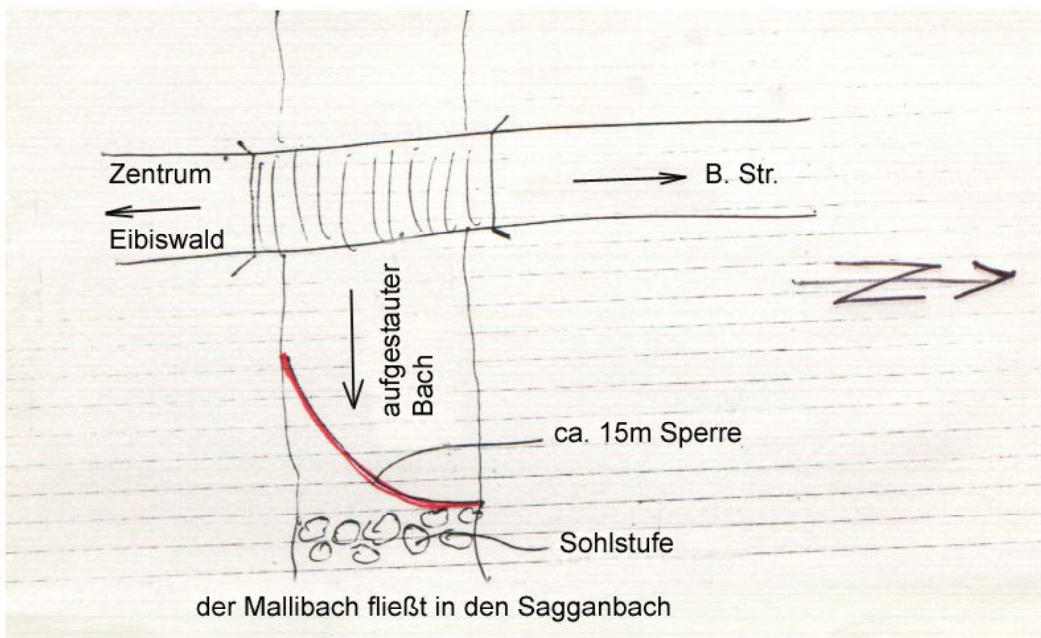
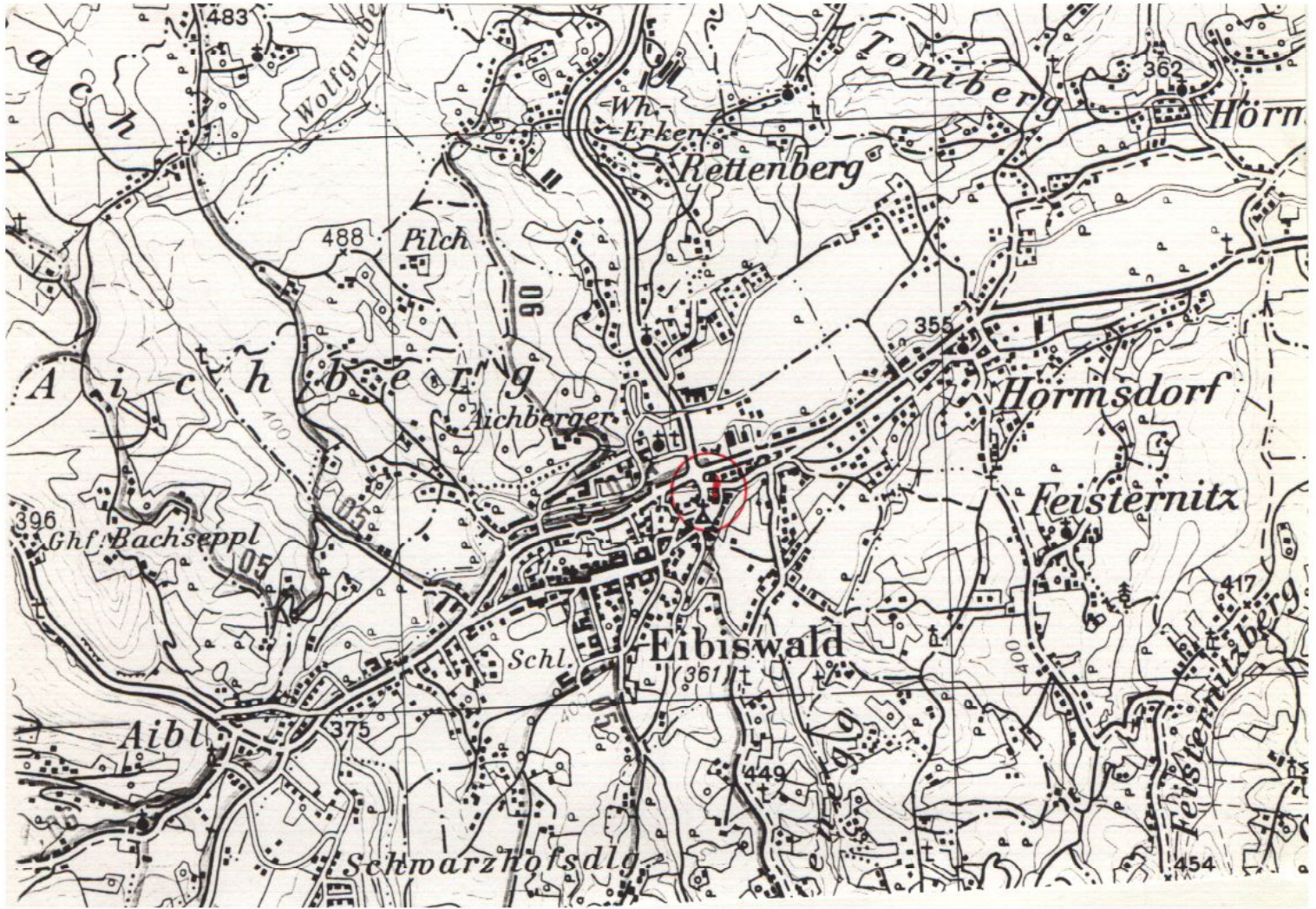
# Ölsperre Weisse Sulm

AWP km 188,600 - 198,560





# ÖLSPERRE MALLIBACH-SAGGAUBACH AWP km 192,000 - 193,400

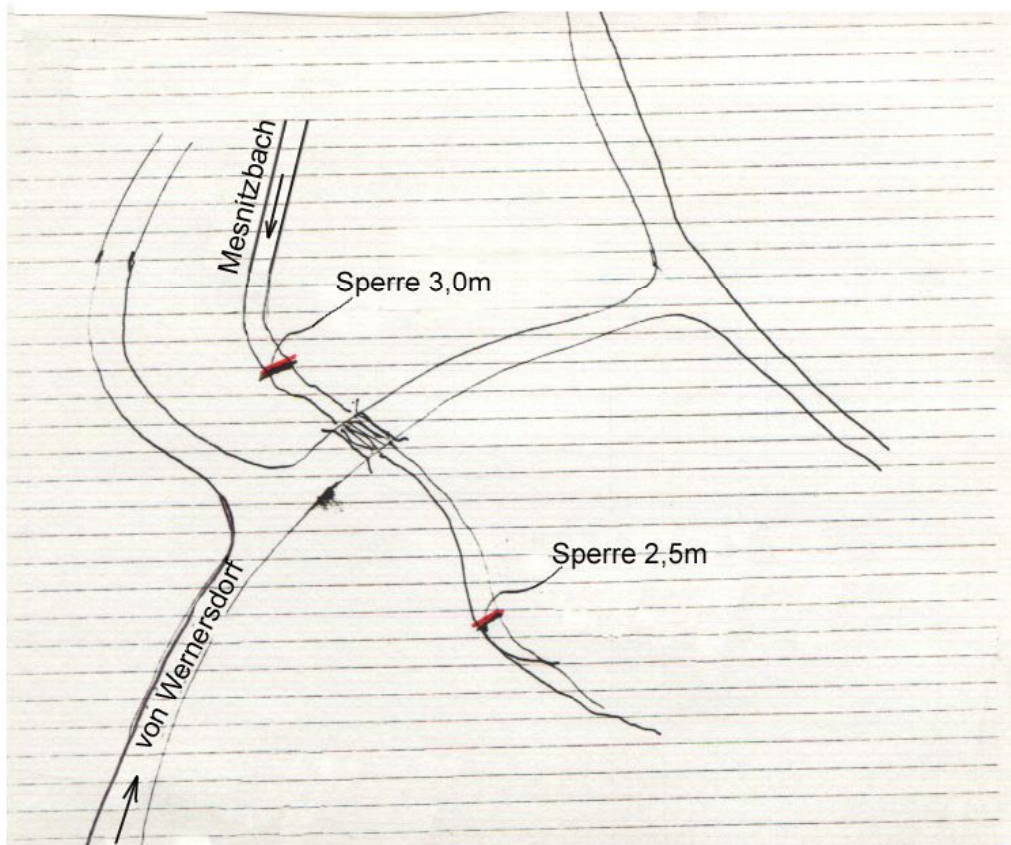
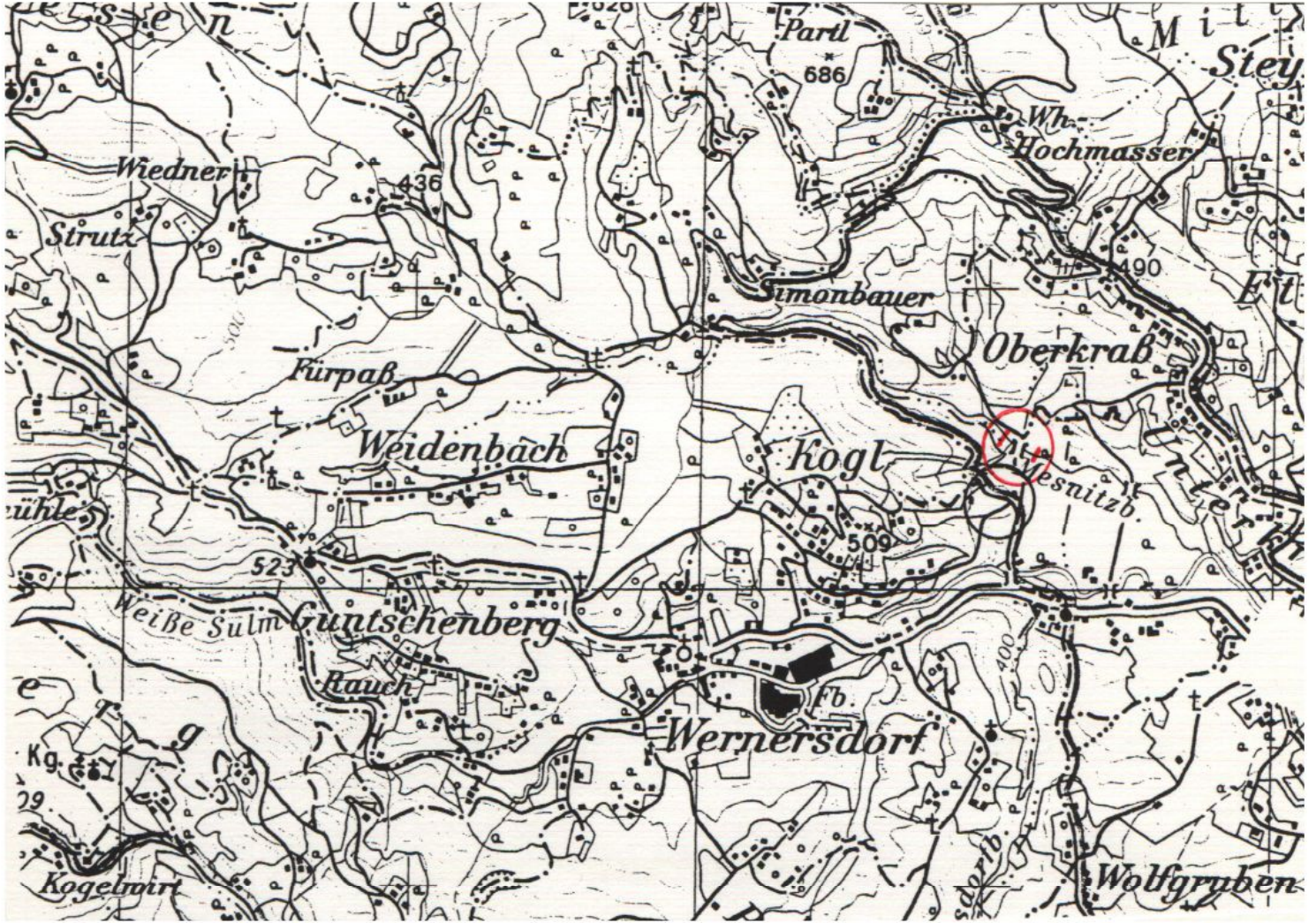




6/7

# ÖLSPERRE MESNITZBACH

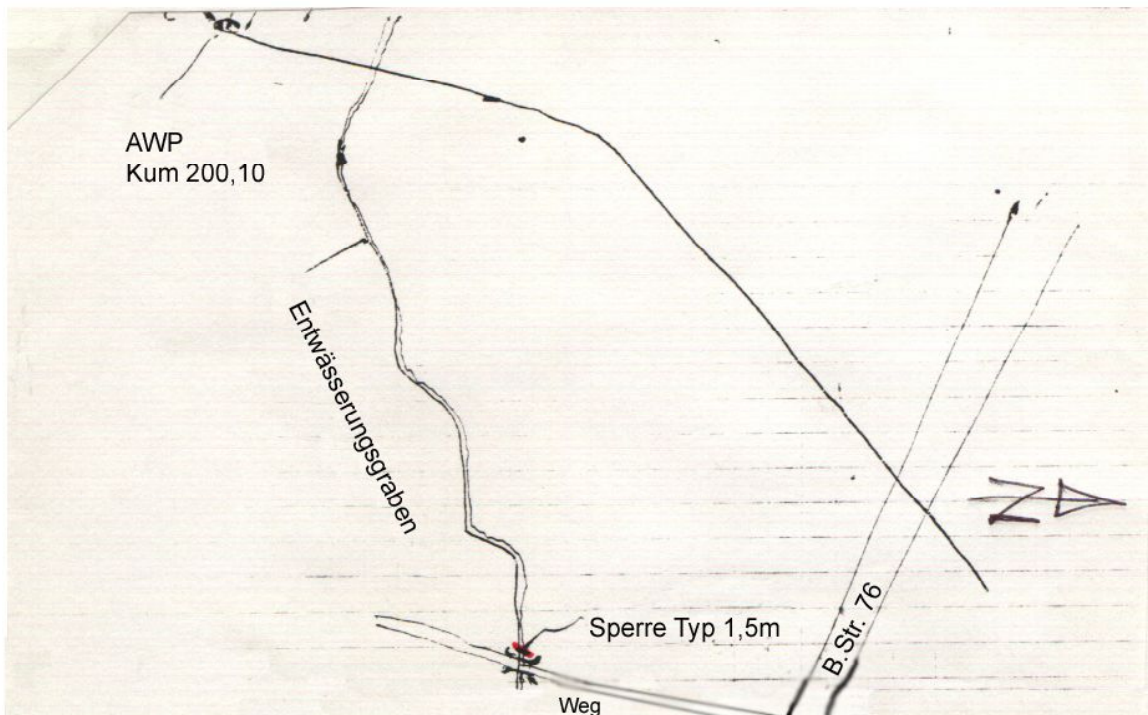
AWP km 195,700 - 198,560





# Ölsperre Entwässerungsgraben

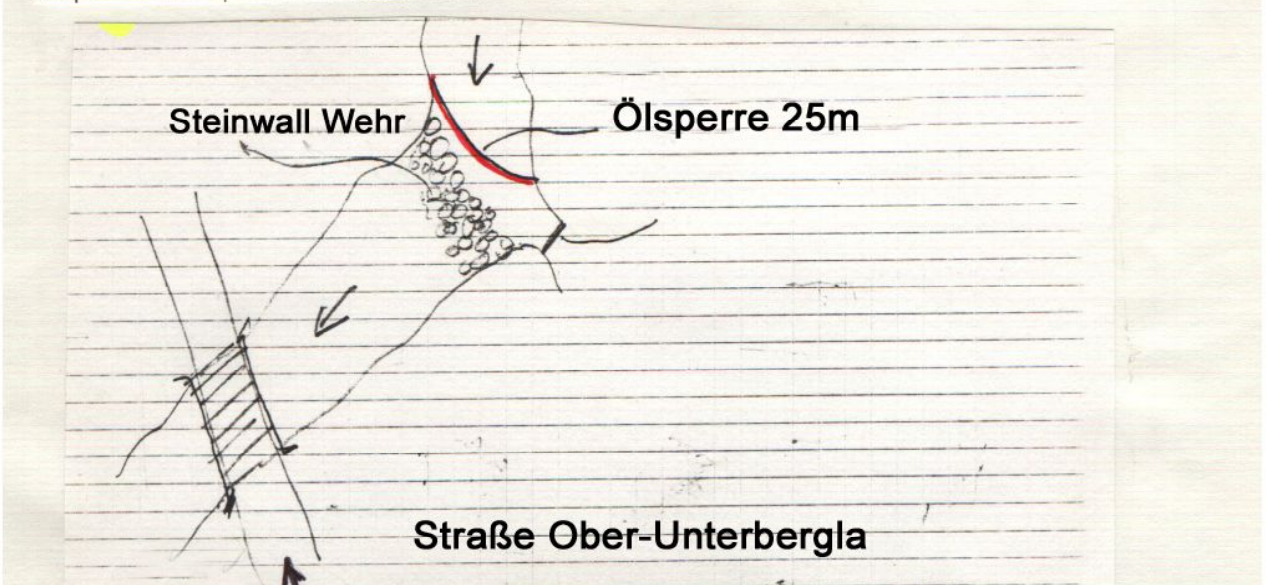
AWP km 198,560 - 200,570





# Ölsperre Schwarze Sulm

AWP km 201,2 - 201,75

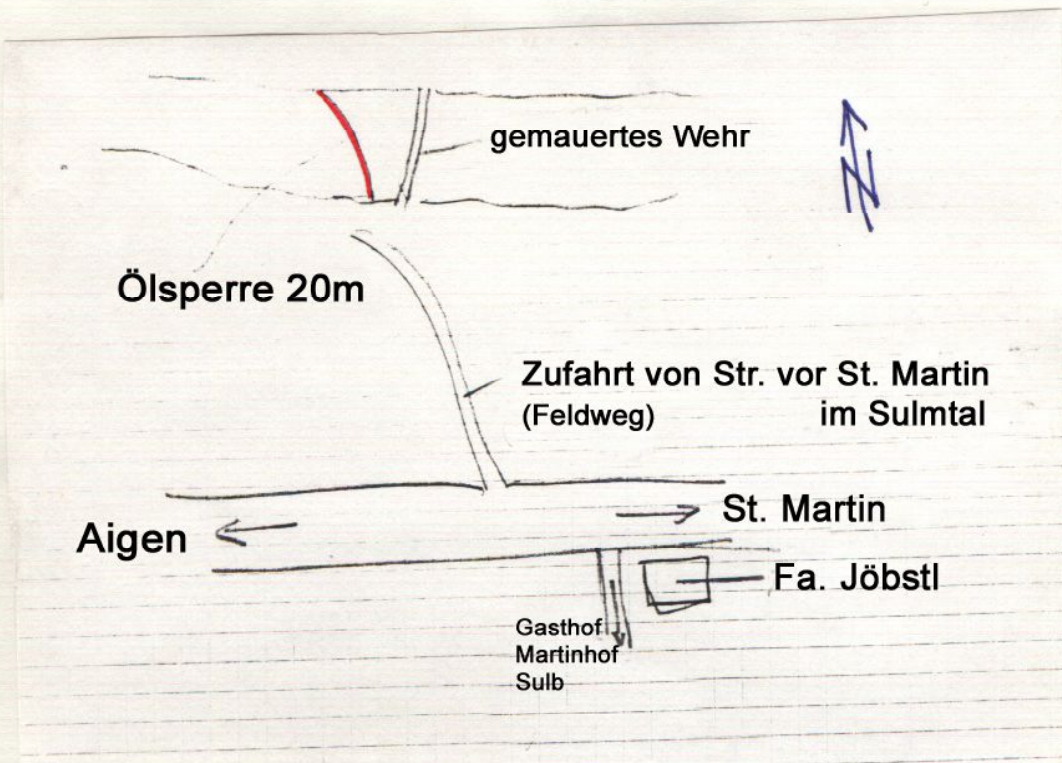
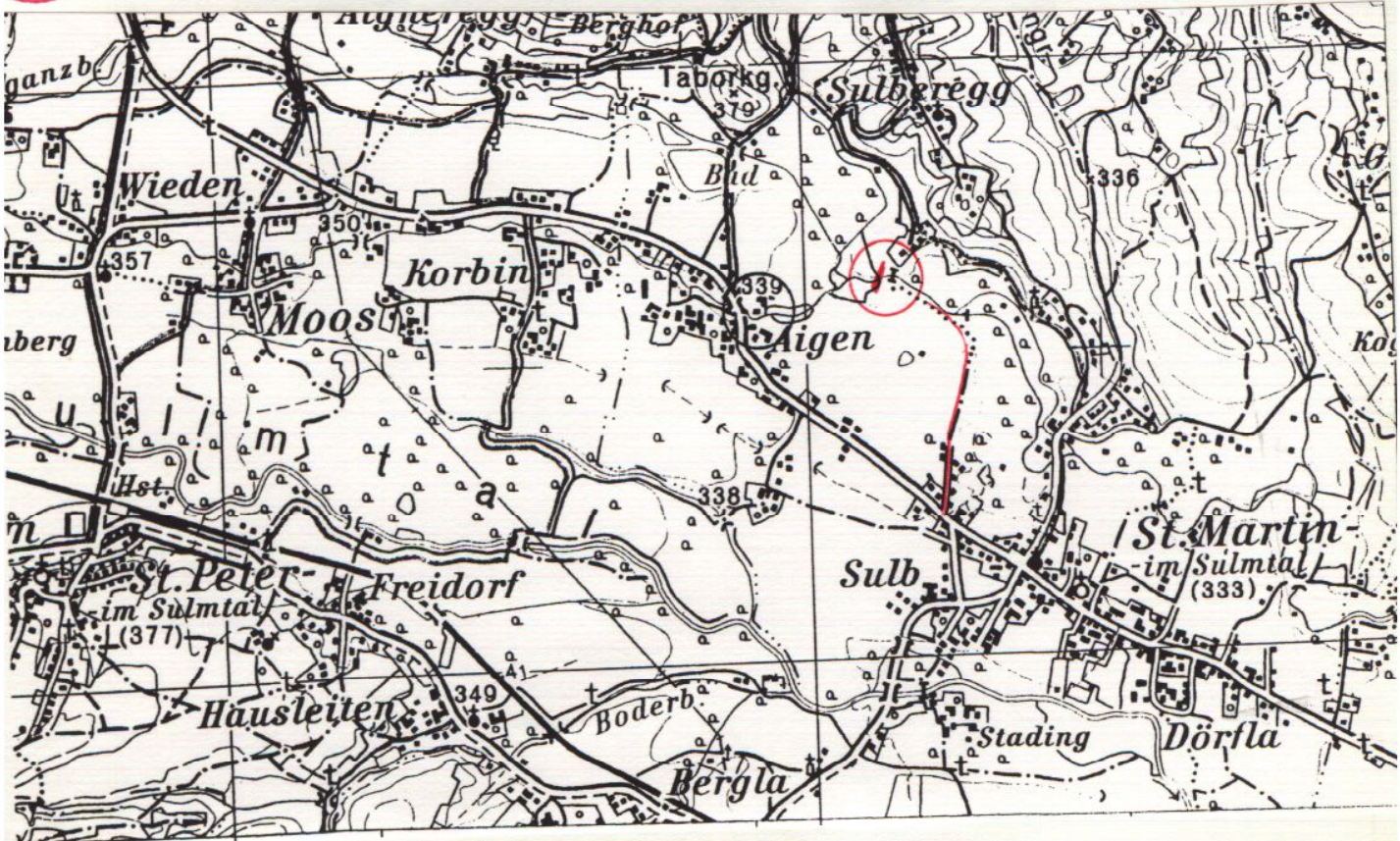




6/10

# Ölsperre Stullneggbach

AWP km 202,7 - 202,95

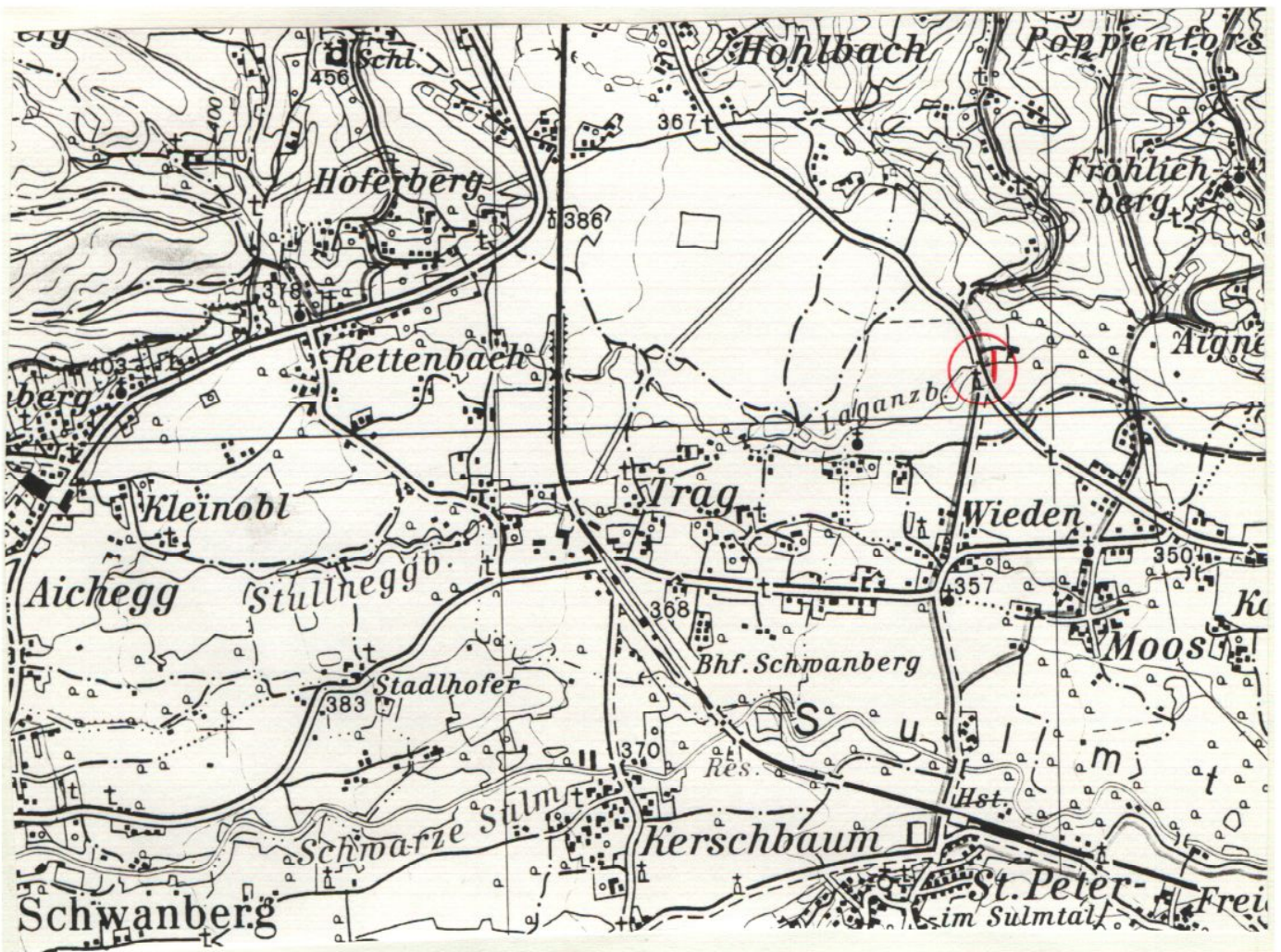




6/11

# Ölsperre Laganzbach

AWP km 203,1 - 203,6

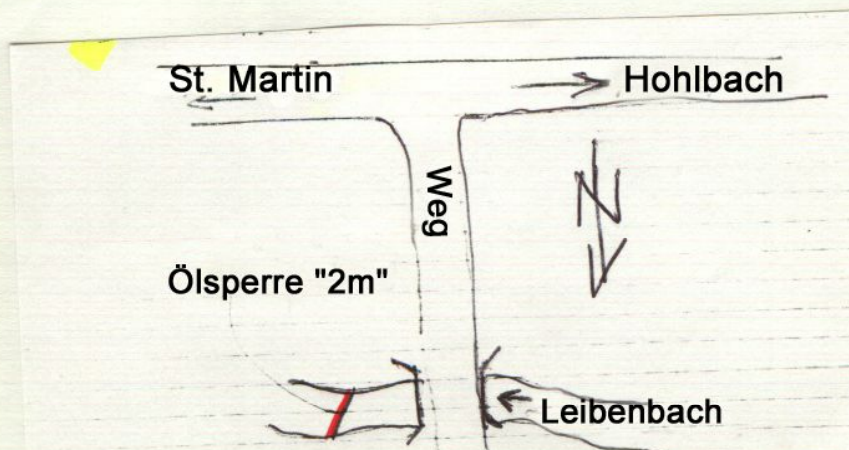




6/12

# Ölsperre Leibenbach

AWP km 204,3

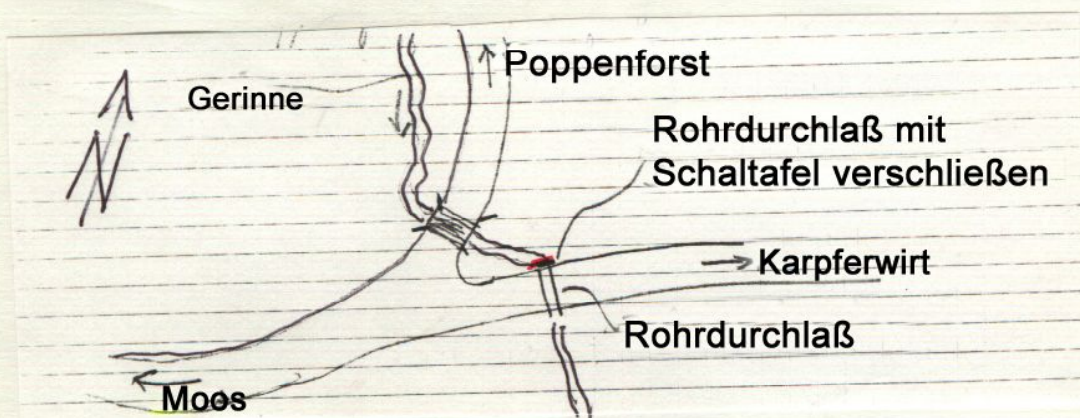
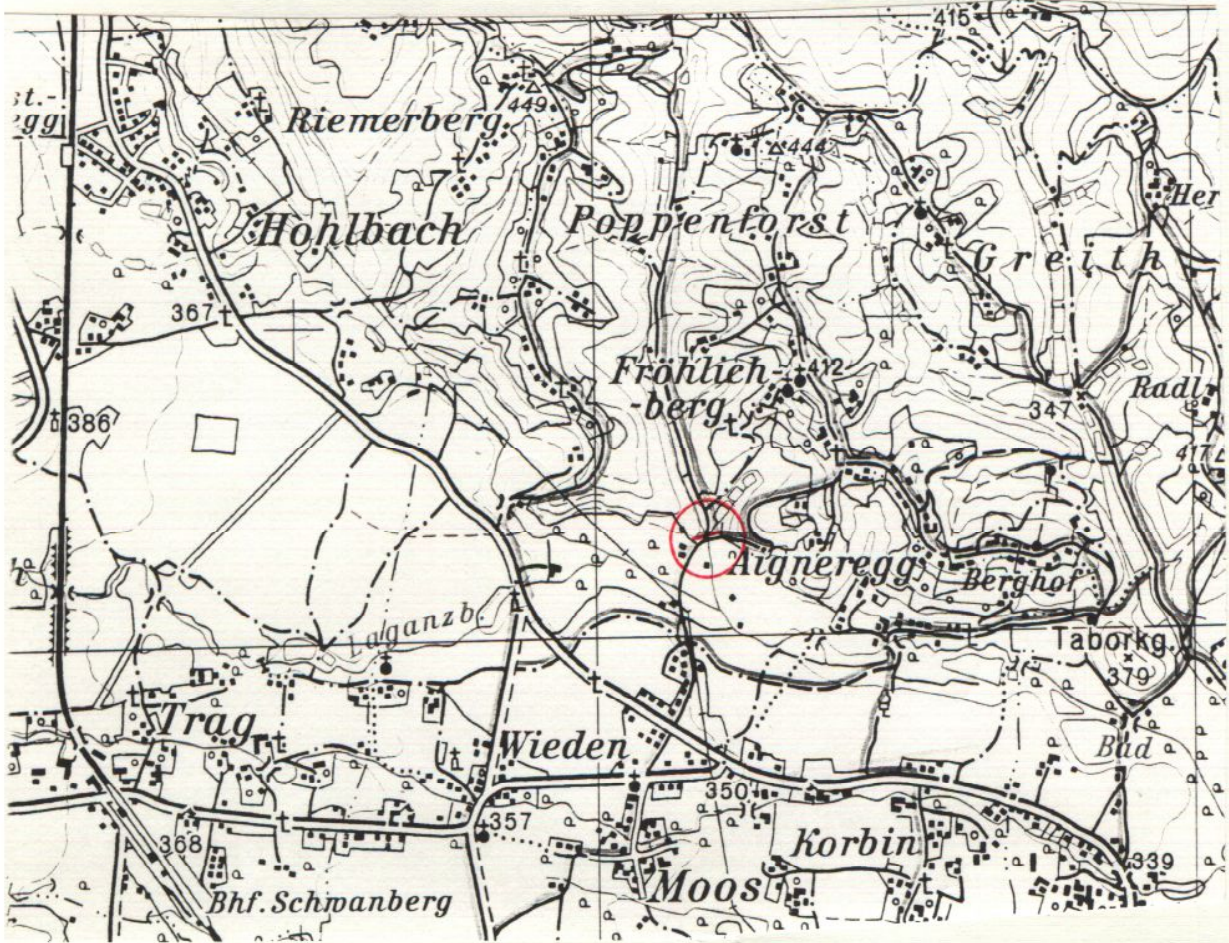




6/13

# Ölsperre Gerinne Poppenforst

AWP km 205,1 - 206,35

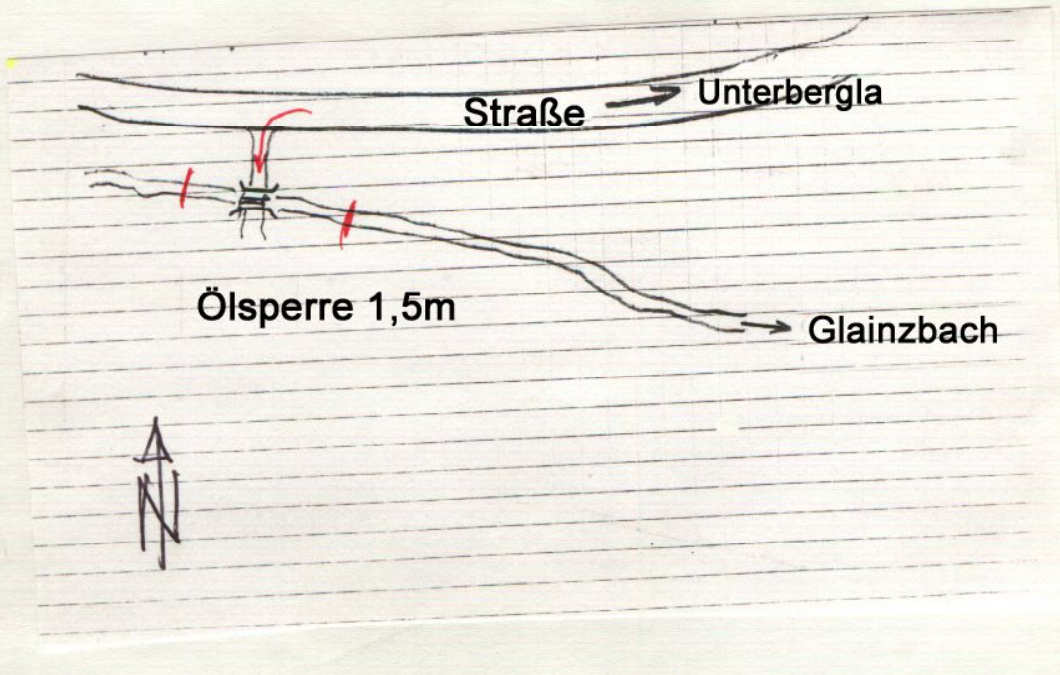
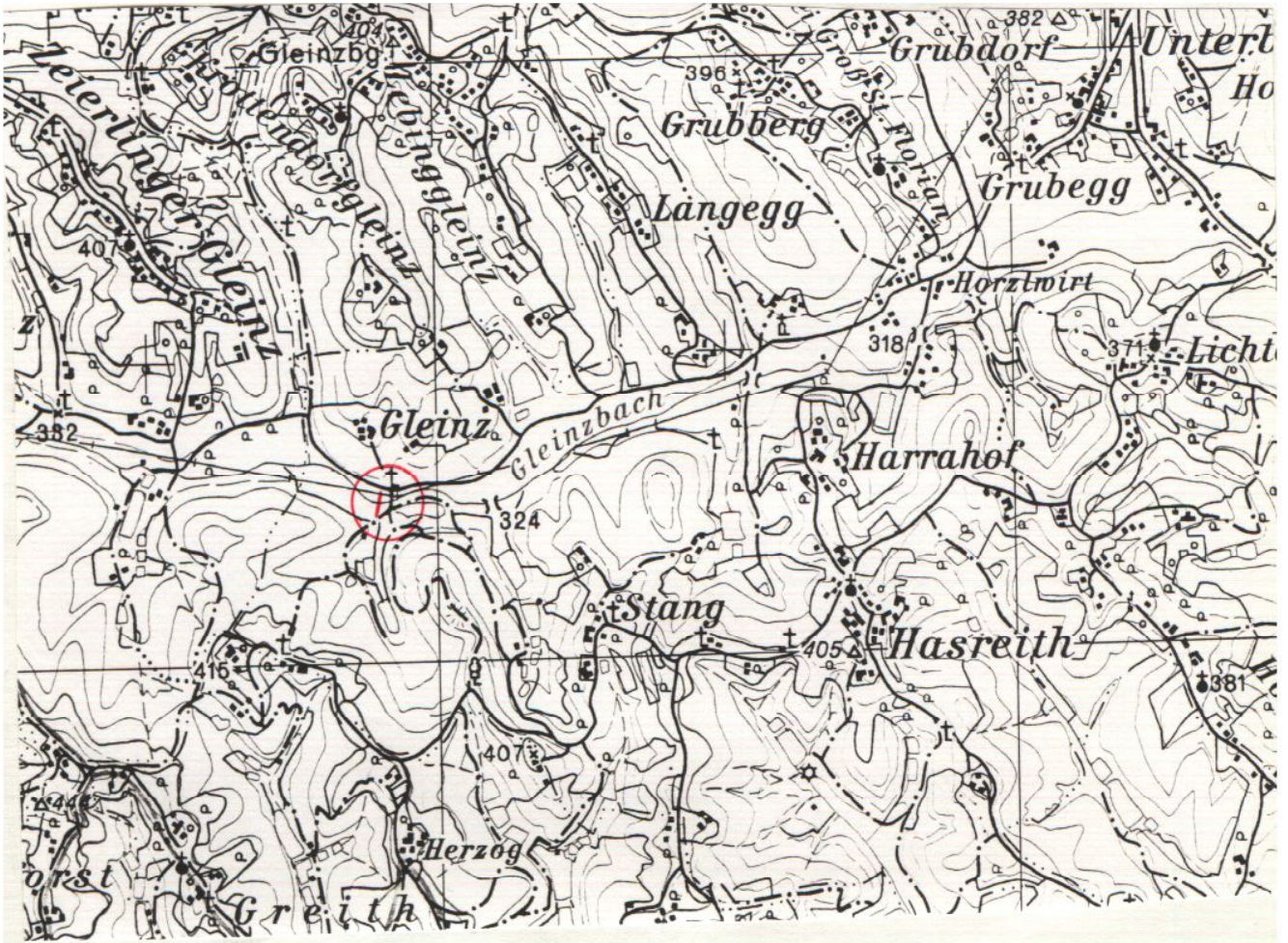




6/14

# Ölsperre Glainzbach

AWP km 207,3 - 207,9

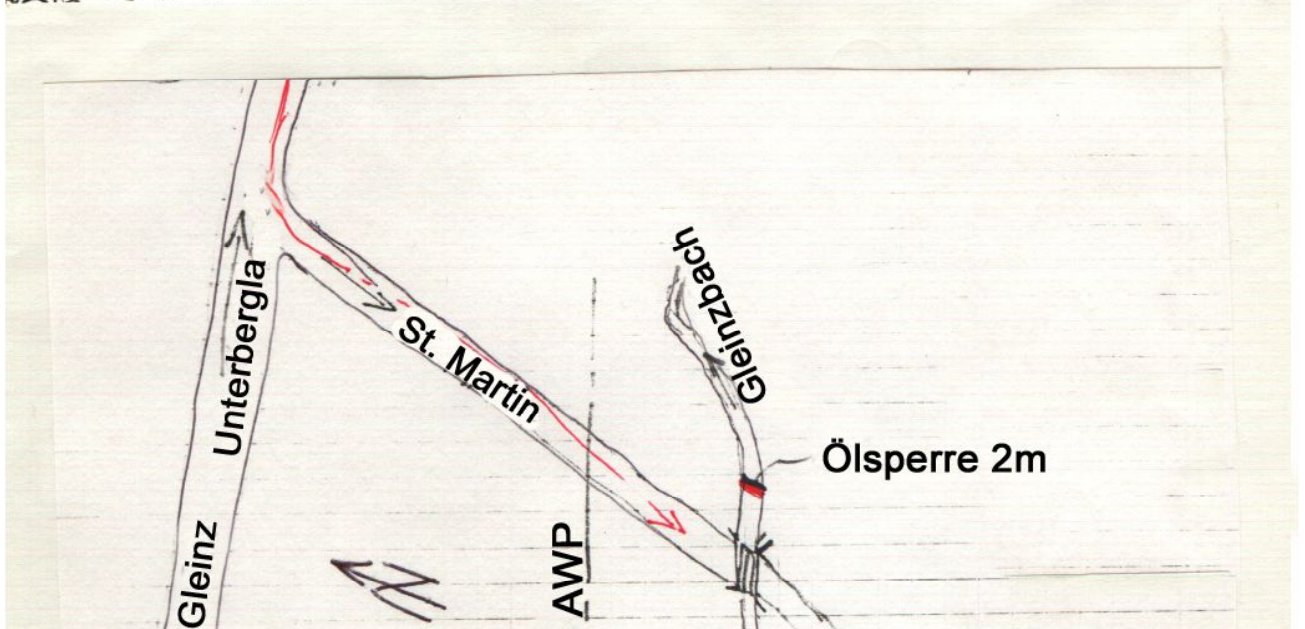
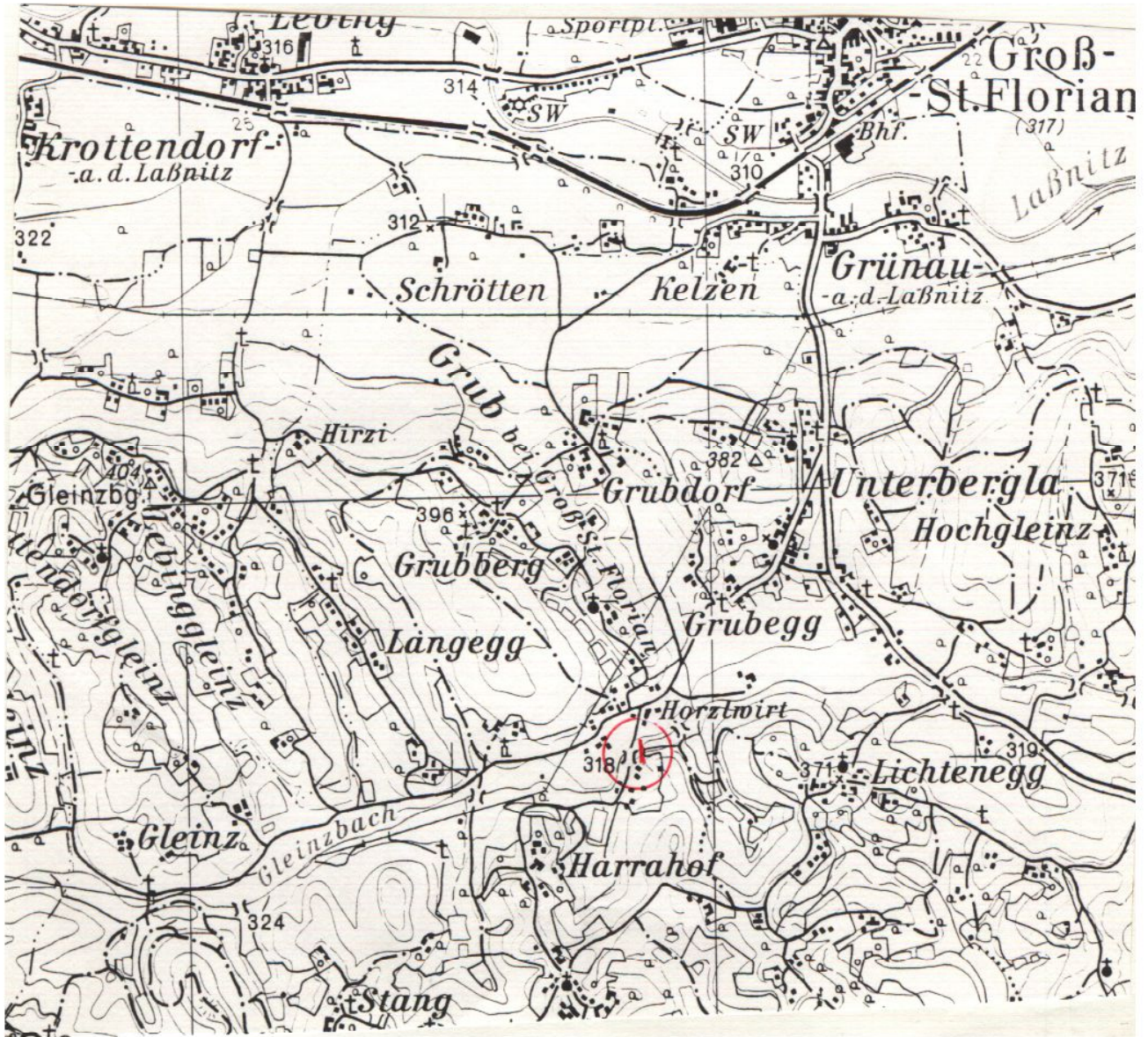




6/15

# Ölsperre Glainzbach

AWP km 207,3 - 210,8

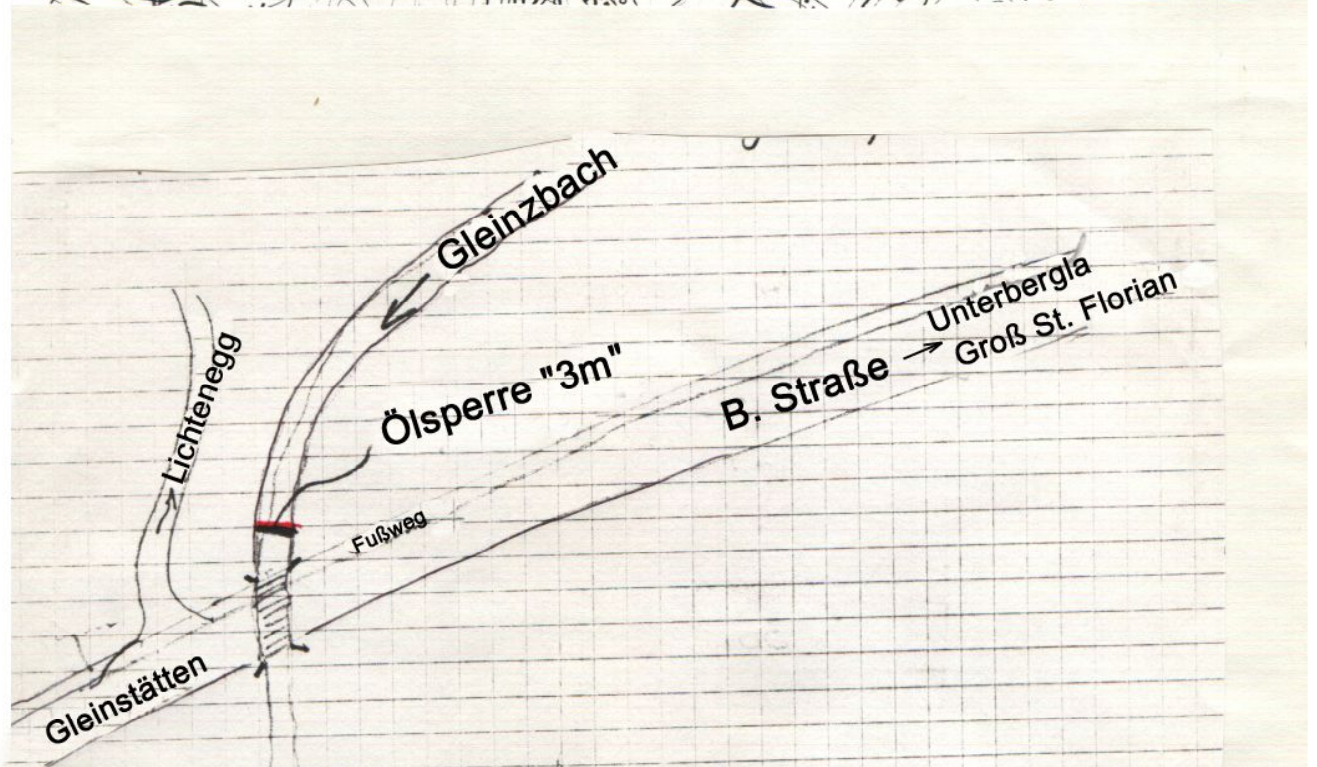
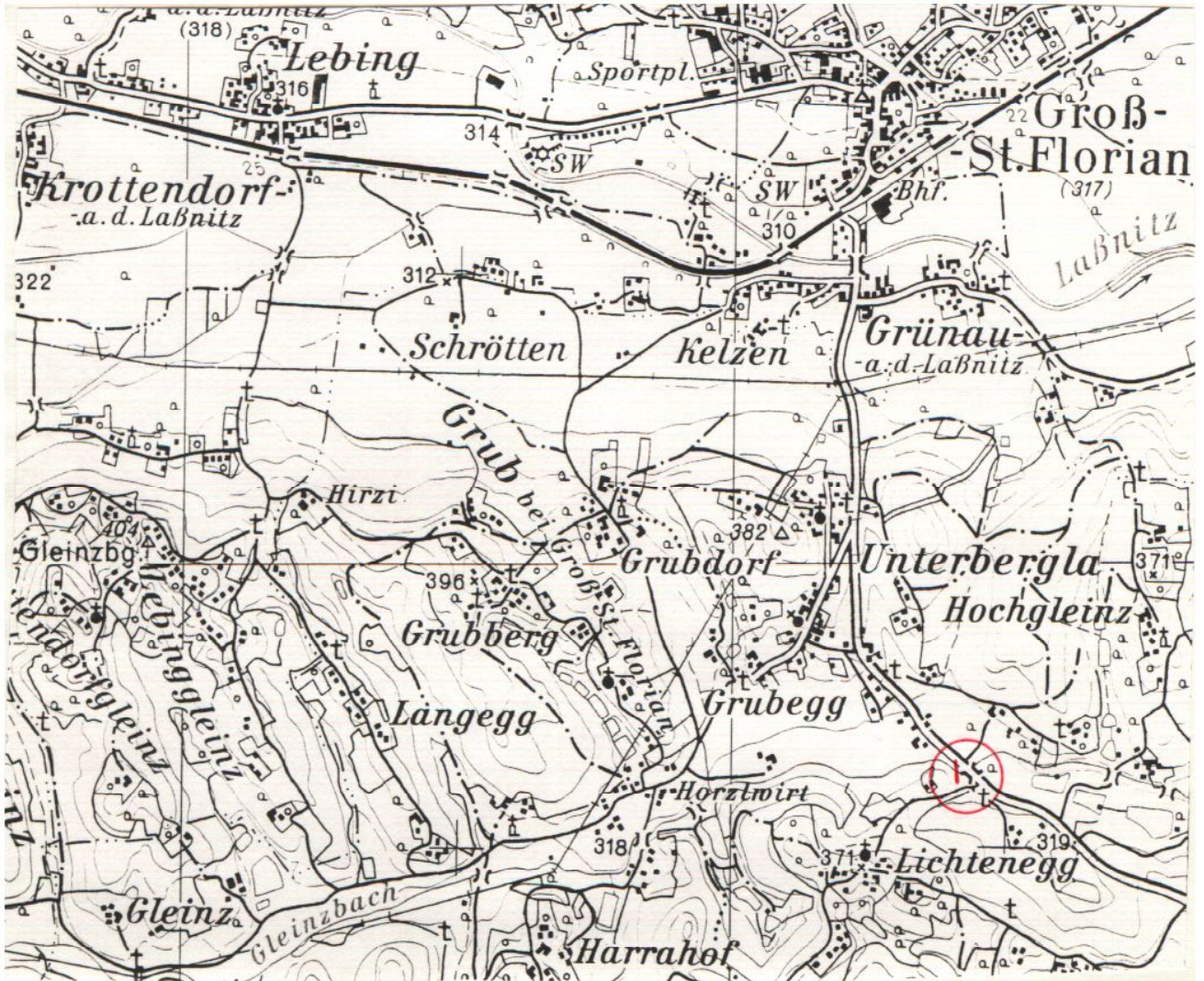




6/16

# Ölsperre - Gleinzbach

AWP km 207,3 - 210,8

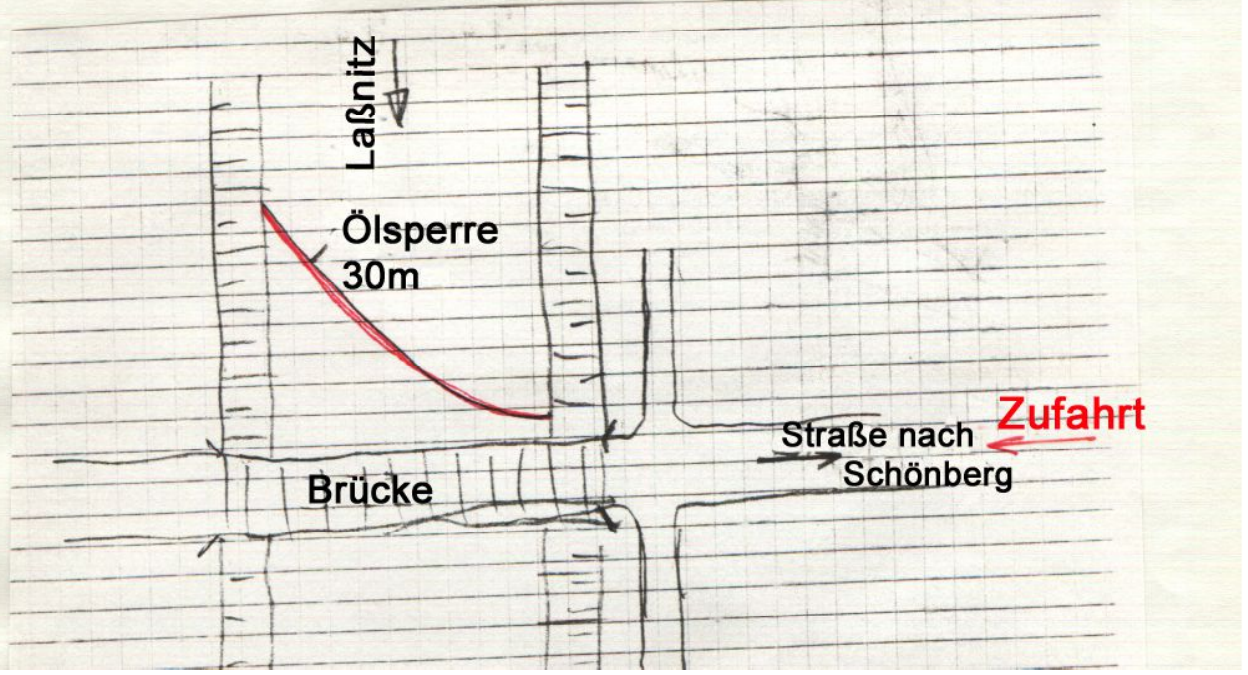
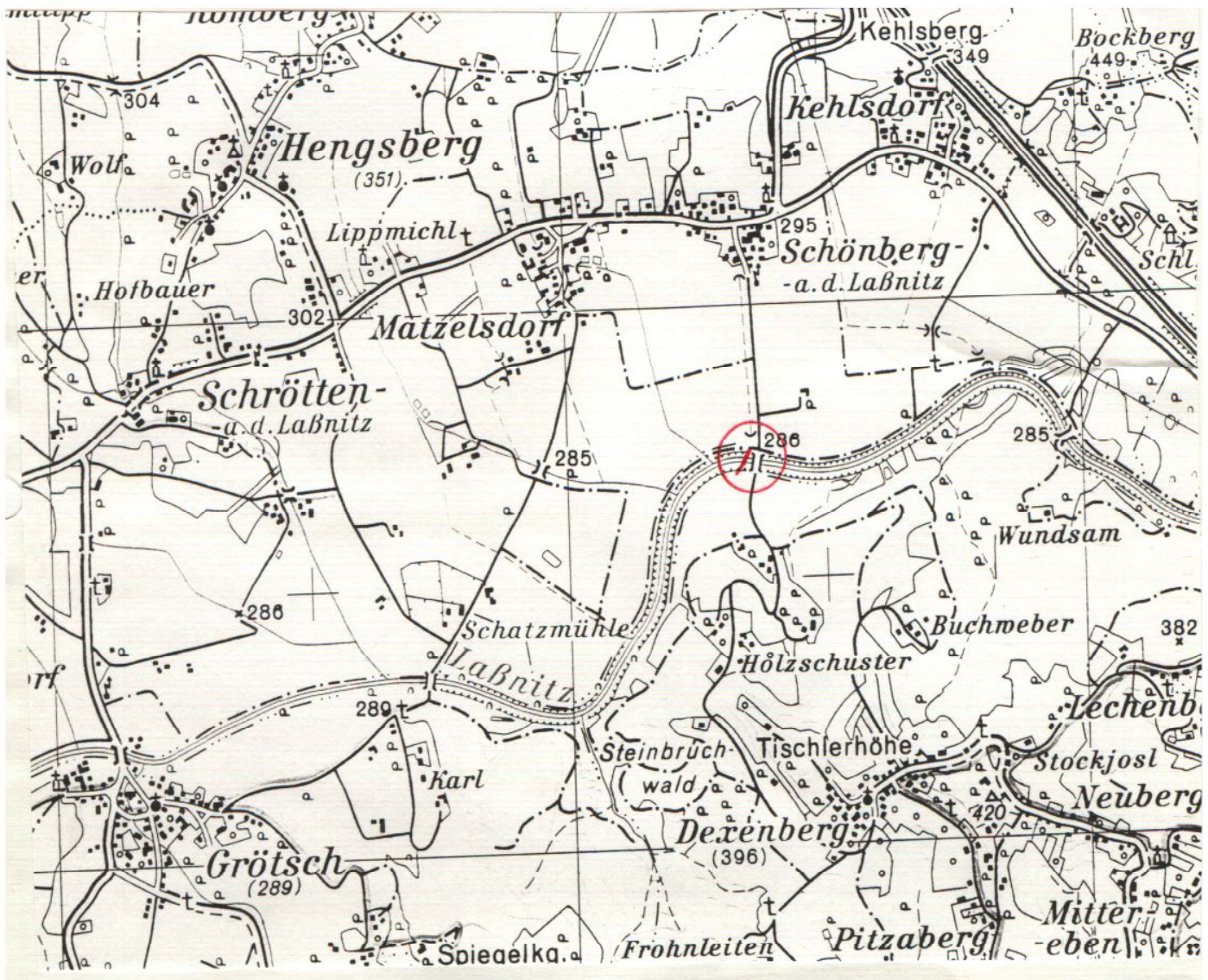




6/17

# Ölsperre Lassnitz

AWP km 211,7 - 226,0

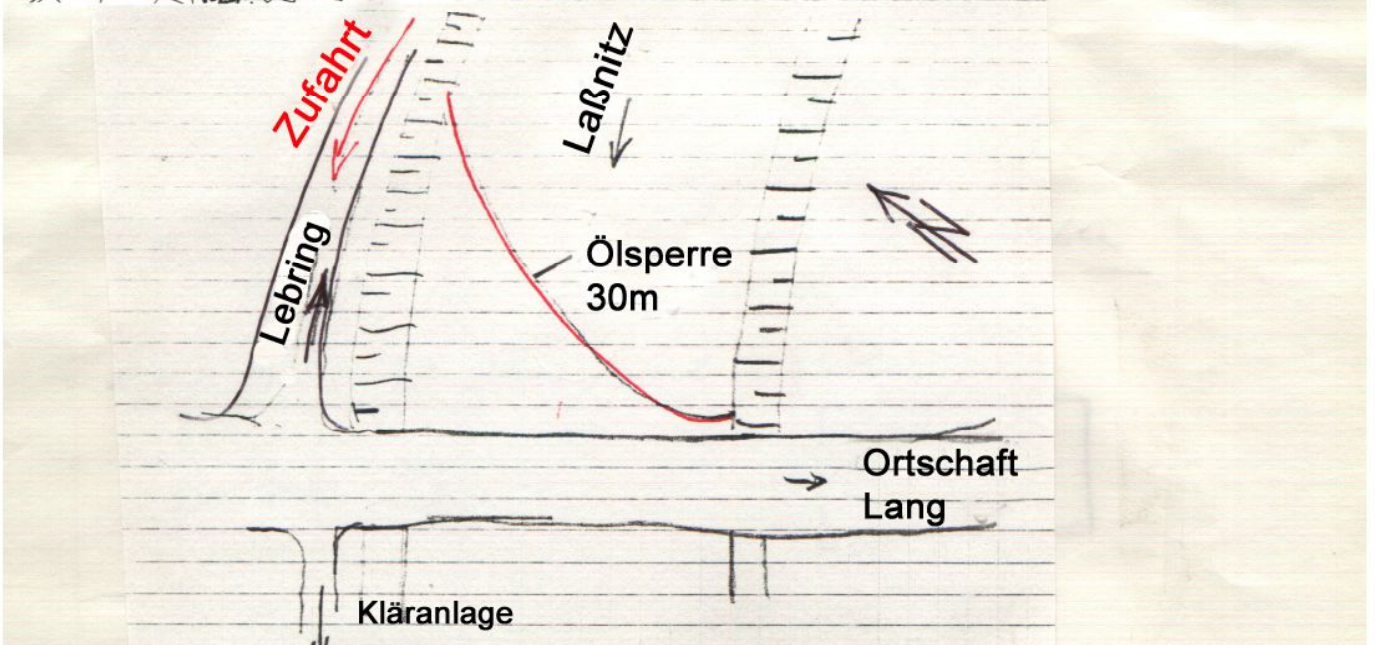
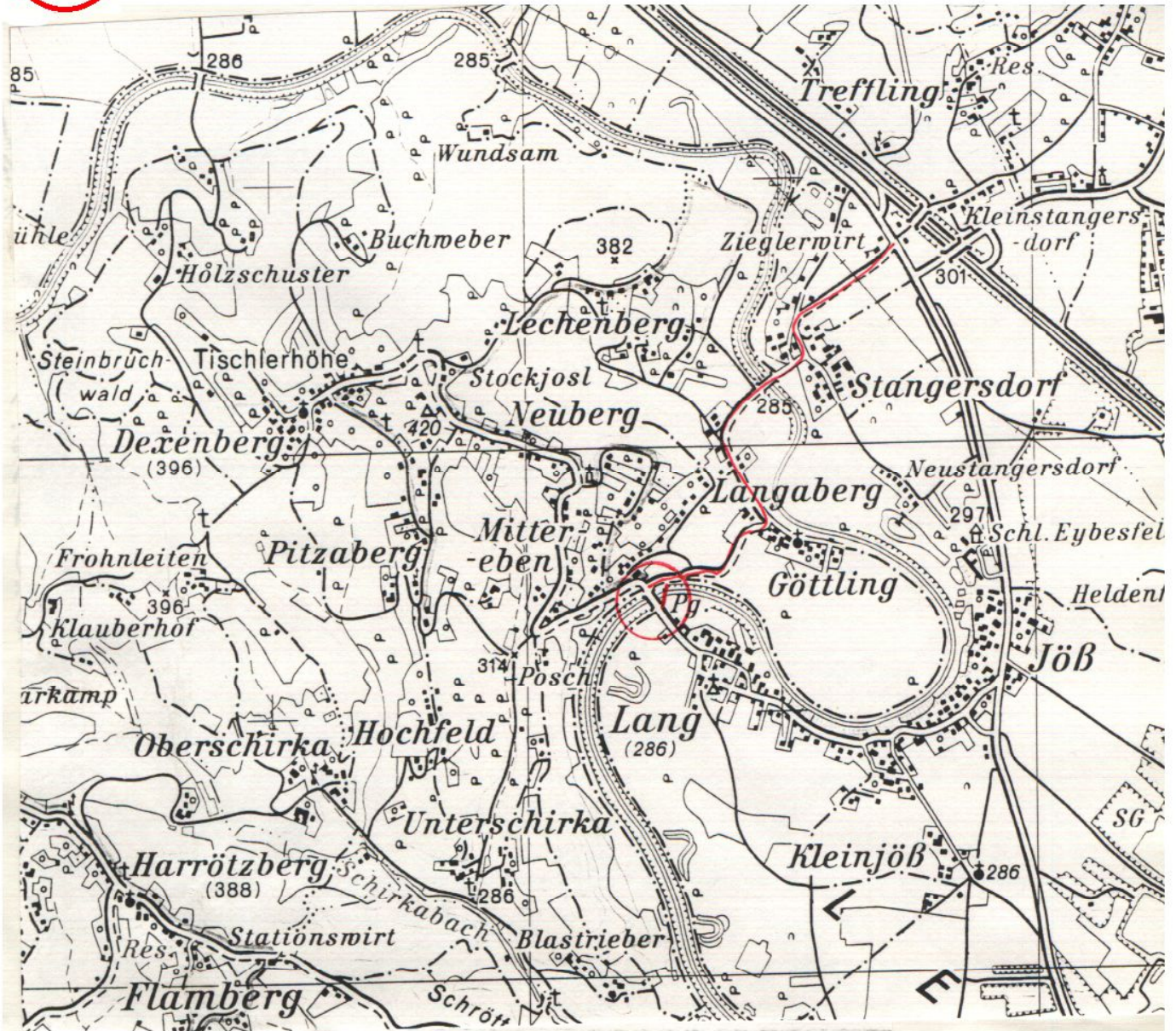




6/18

# Ölsperre Lassnitz

AWP km 211,7 - 228

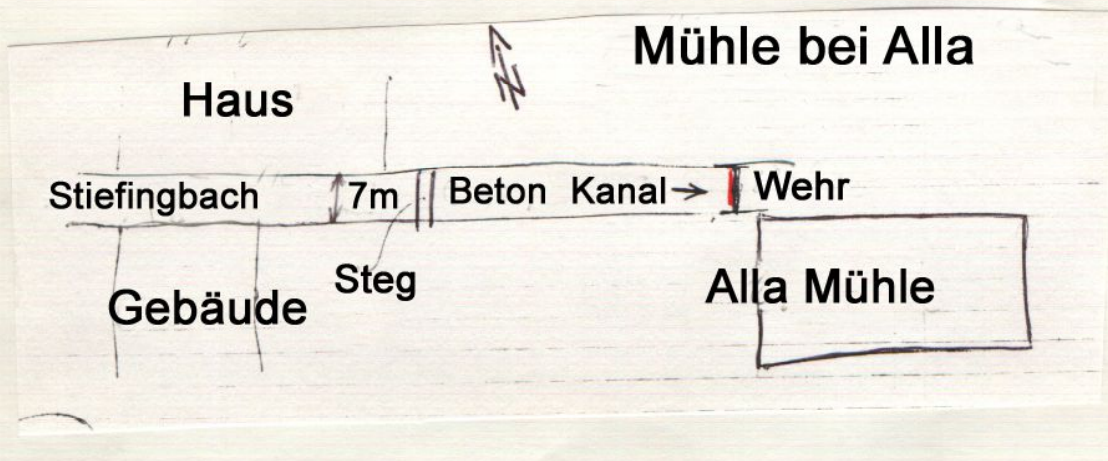
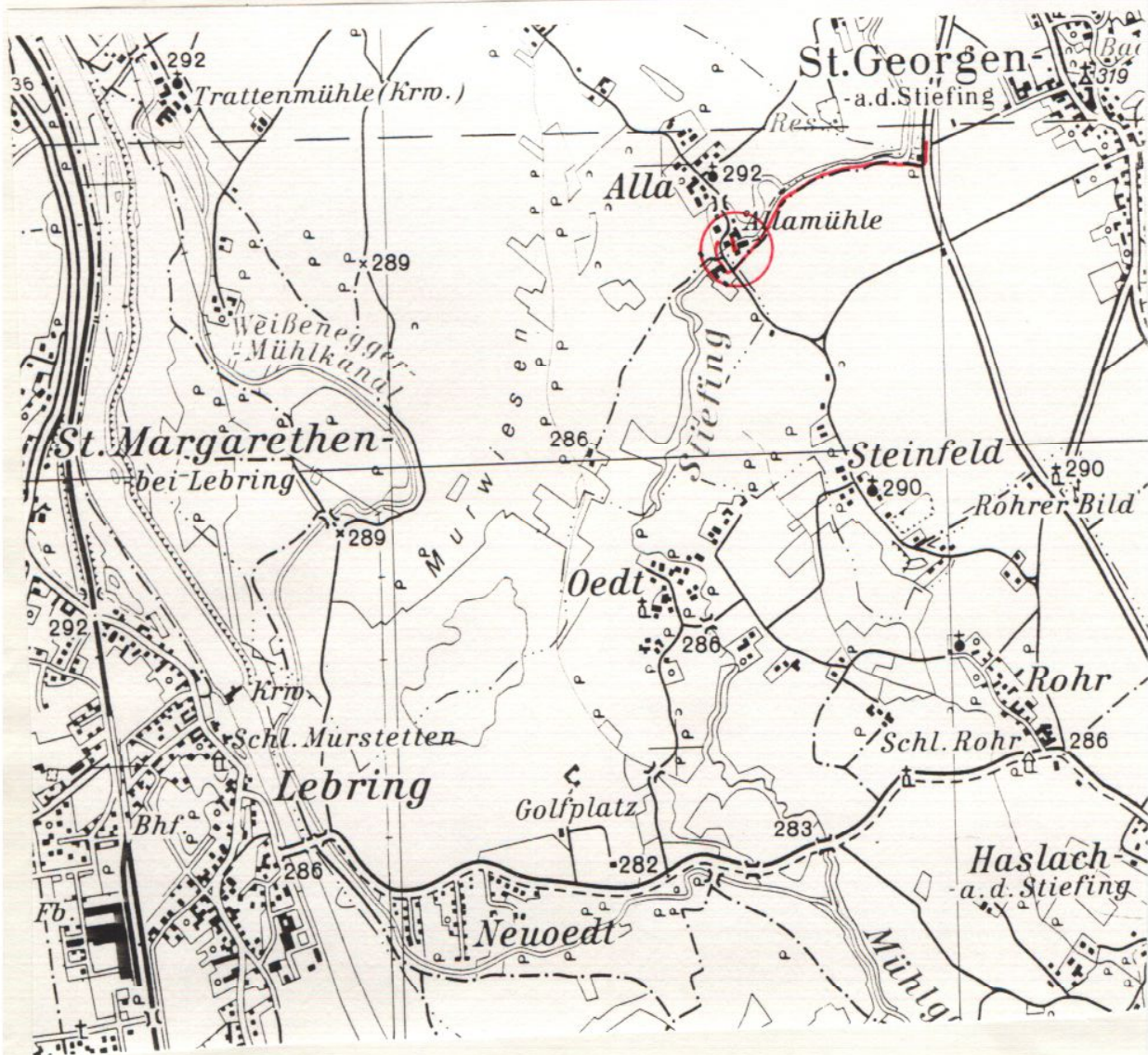




6/19

# Ölsperre Stiefingbach

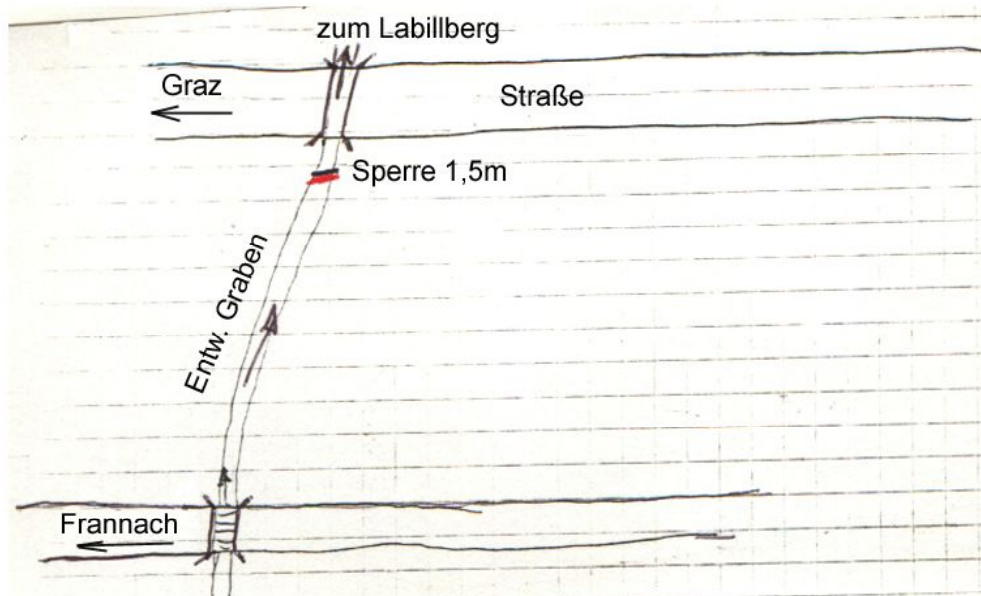
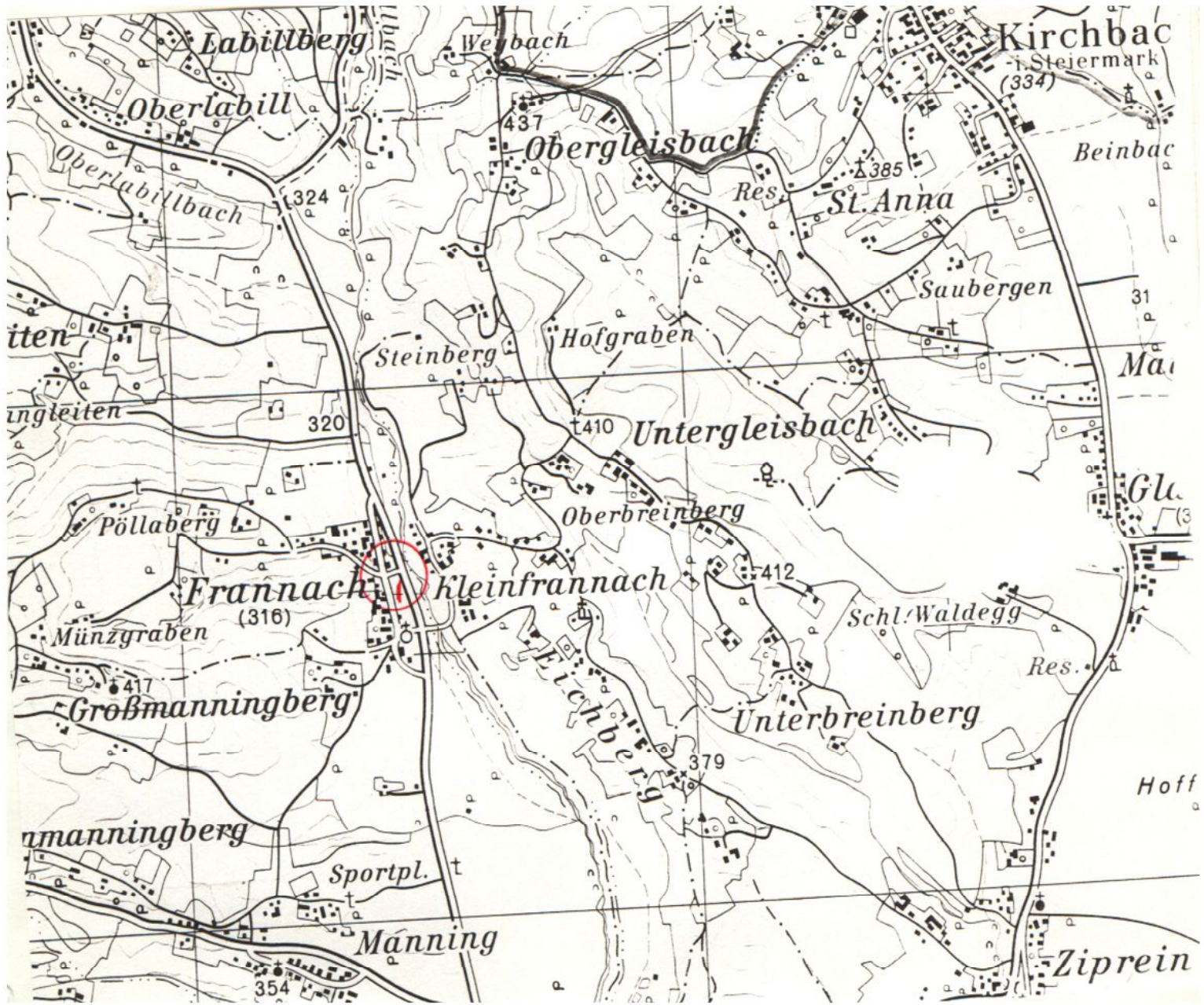
AWP km 234,25 - 238,8





7/1

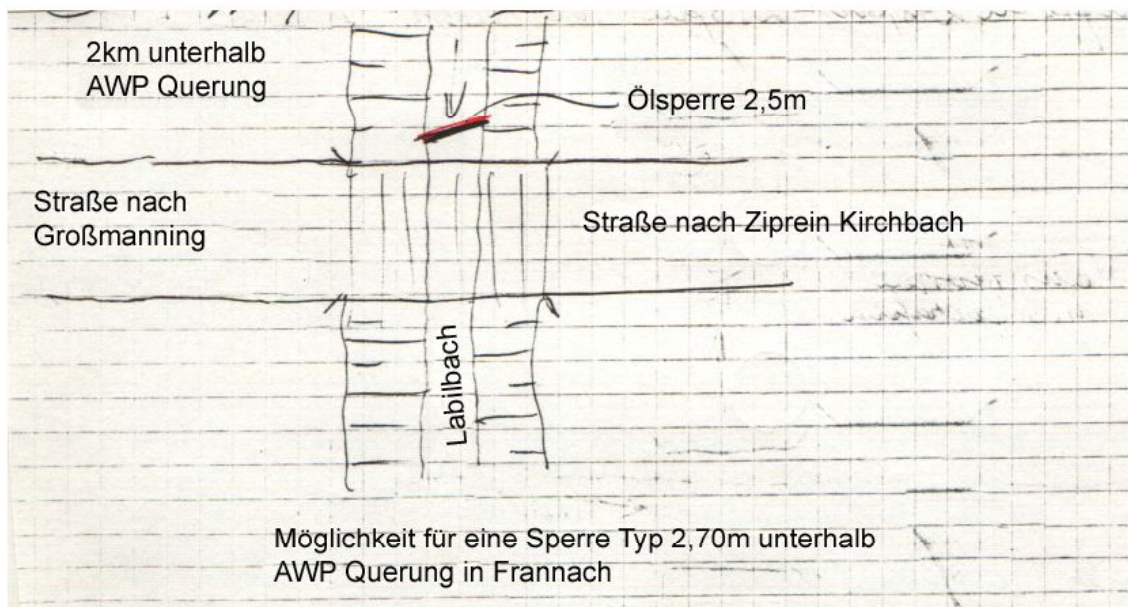
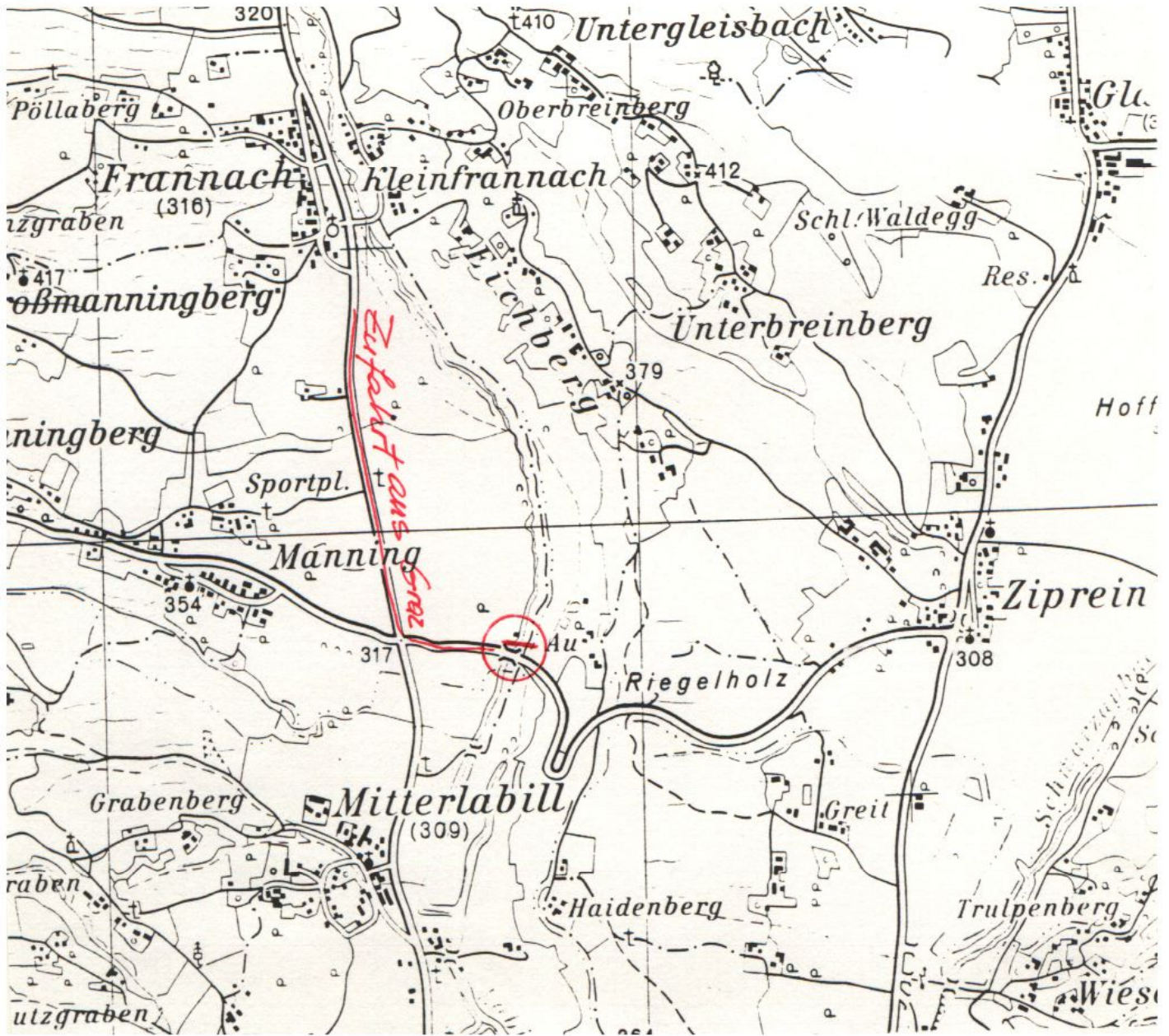
# Ölsperre Entwässerungsgraben Frannach AWP km 239,000 - 240,000





712

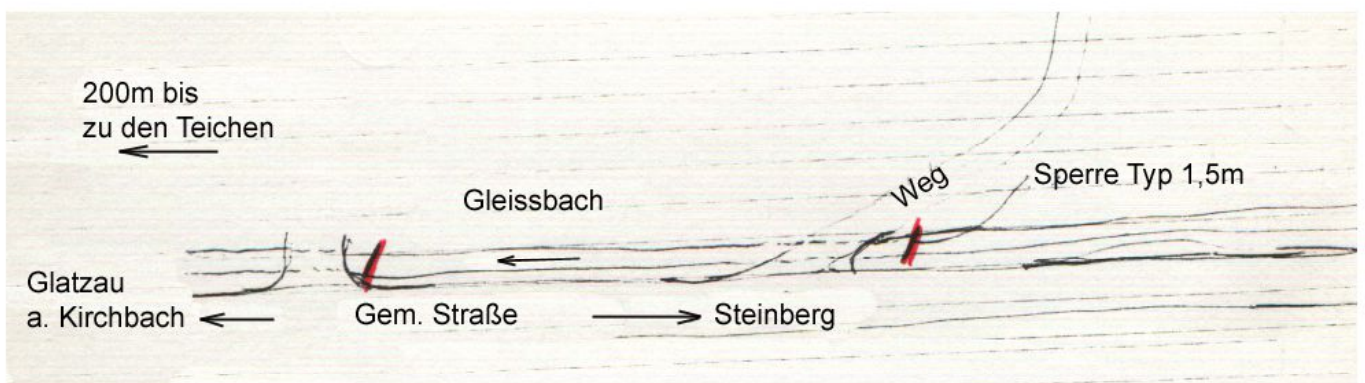
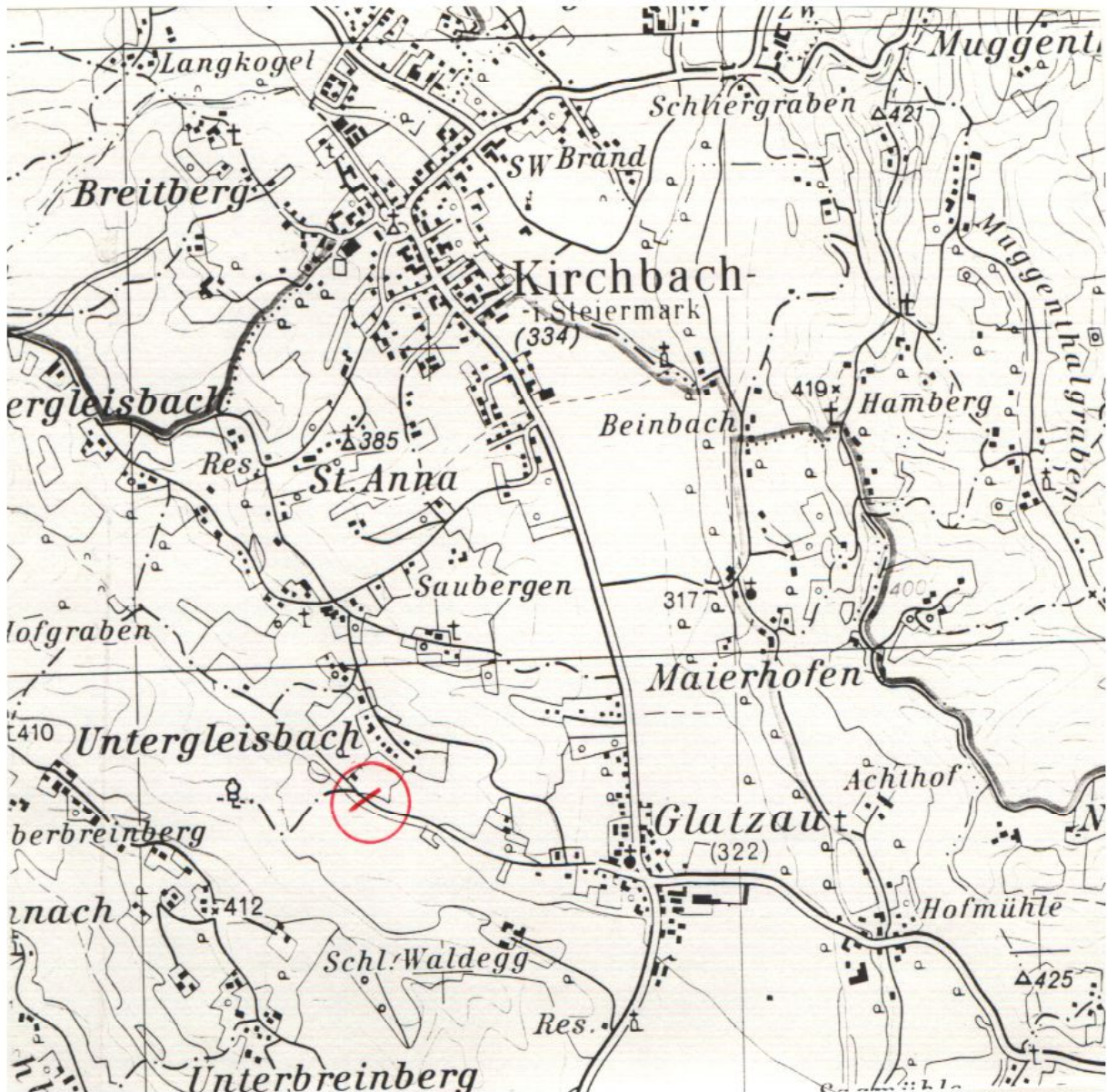
# Ölsperre Labilbach AWP km 239,000- 242,000





7/3

# Ölsperre Gleissbach AWP km 242,010 - 242,320

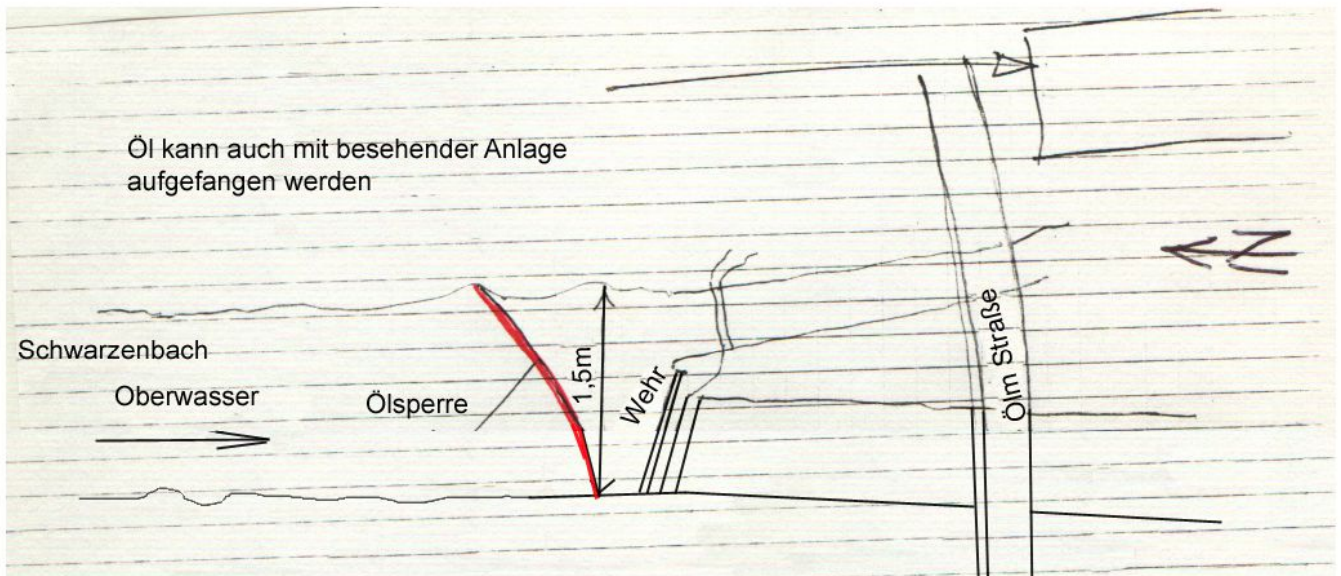




7/4

# Ölsperre Zerlach Dörfla u. Schwarzaubach

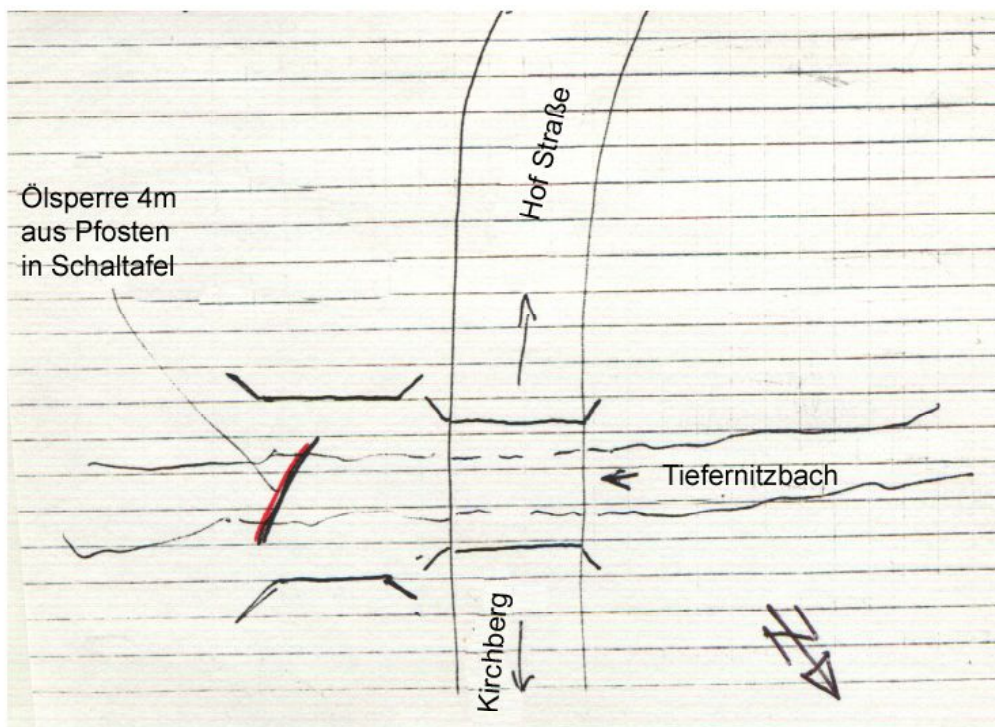
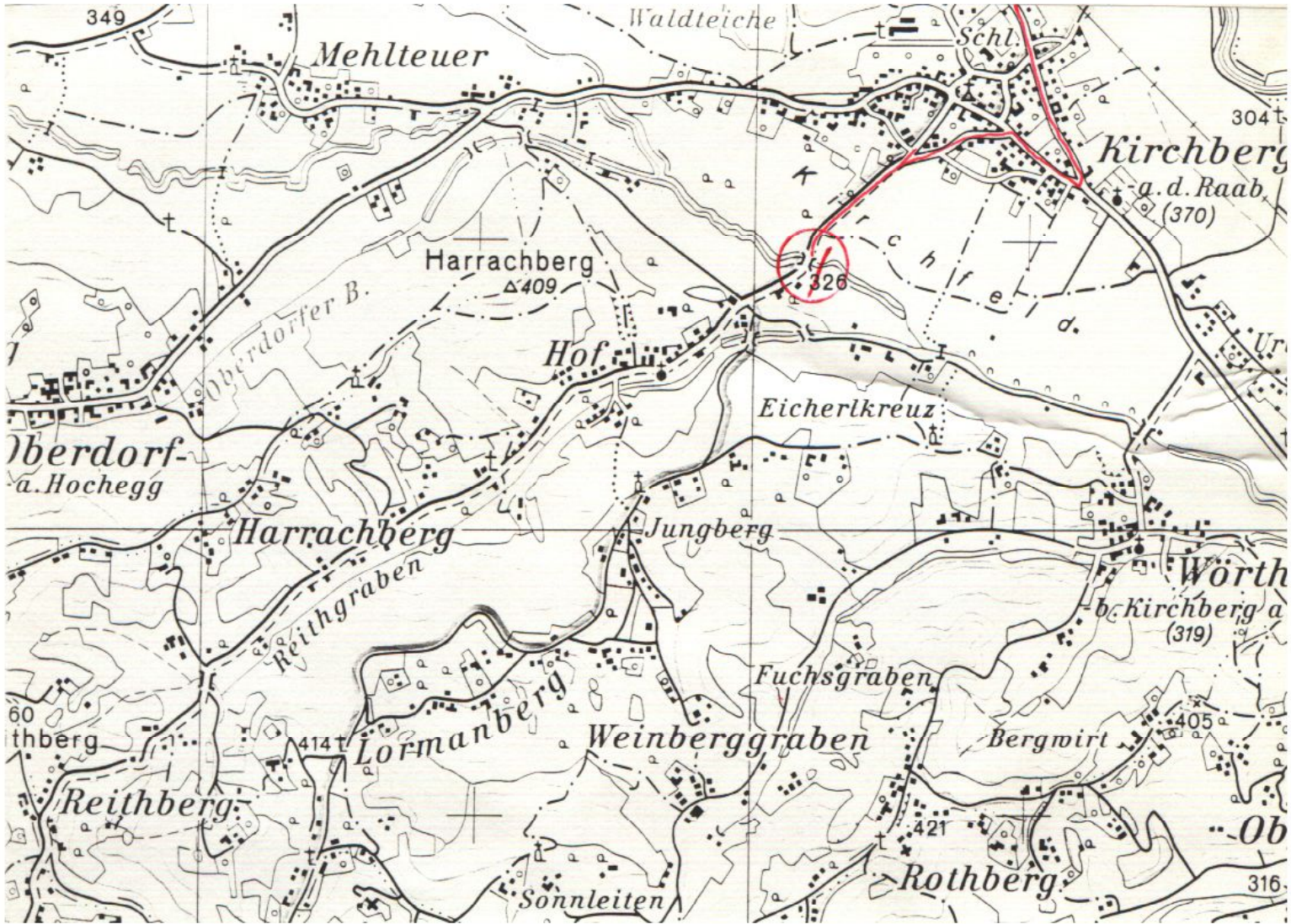
AWP km 242,320 - 245,800





7/5

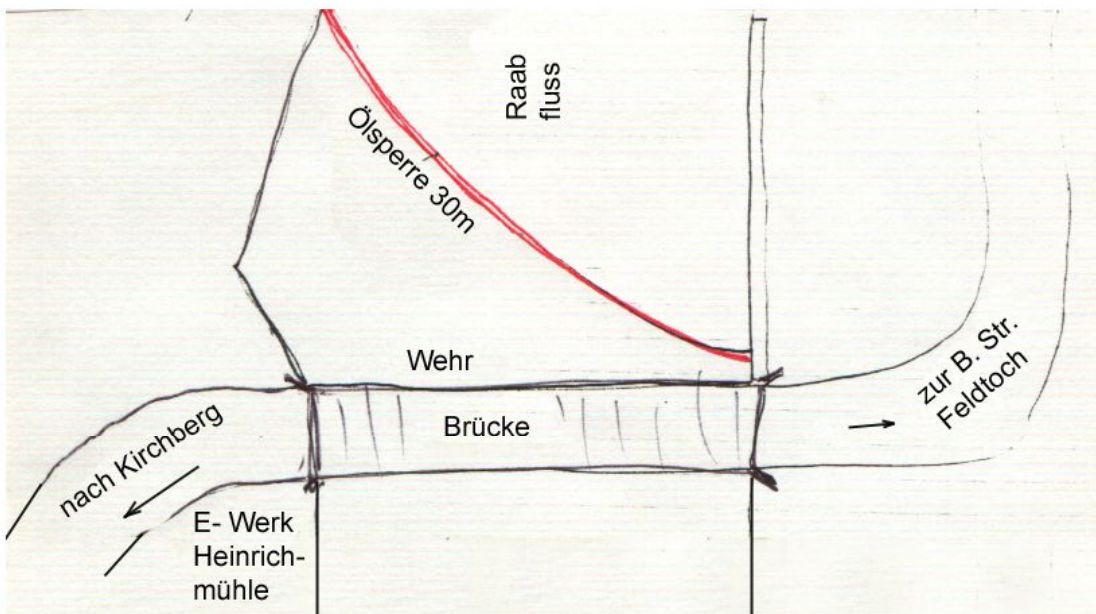
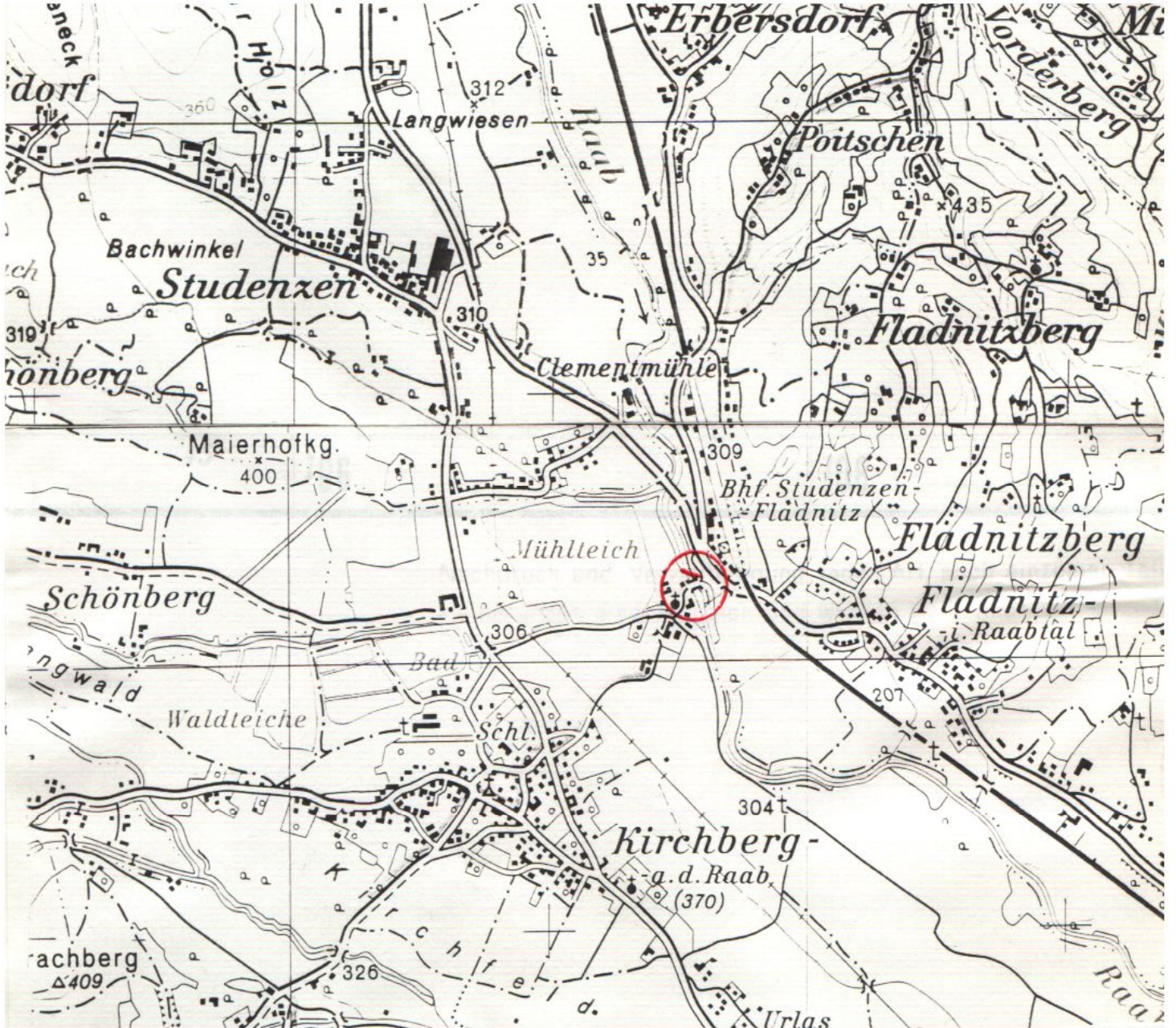
# Ösperre Oberdorfer u. Tiefernitzbach AWP km 248,300 - 253,200





7/16

# Ölsperre Studenbach AWP km 254,600 - 255,550





717

# Ölsperre Raabfluss

AWP km 255,550 - 262,350

